

PERFORMANCE SOLUTIONS FOR RIGHT ANGLE GRINDERS



NORTON

SAINT-GOBAIN®



INTRODUCTION

At Norton we know a lot about abrasives. Using our technical expertise and knowledge gained over many years of manufacturing and selling cutting-off and grinding wheels, flap and fibre discs and finishing and polishing products into the Metal Fabrication market, we bring you the new performance solution brochure for right angle grinder applications.

This brochure provides solutions, recommendations, tips and advice for a more productive and profitable return on your investment, and is designed to:

- Match application needs and requirements to real solutions
- Introduce efficient, unique, new product innovations
- Provide a performance and economical product offering
- Include a step-by-step process driven approach for a practical solution



To see the products for yourself, training and demonstration opportunities are available and held in our Centre of Excellence facilities located across Europe. For more information, contact your local sales representative.

THE SEQUENTIAL PATH



The sequential path charted above represents the 8 key application processes found in metal fabrication today, where right angled grinders are most commonly used. The colour coded chart is referenced on each of the following pages, providing a 'best product' solution for each application.

GRIT APPLICATION TABLE

The table below shows the the grit overlap for each product type, for every stage of the application process.

	COARSE (GRINDING)						FINE (FINISHING)				
Grit	24	30	36	40	50	60	80	100	120	150-180	180-320 +
Cutting-off and grinding wheels		Cutting-off									
		Heavy Duty Grinding									
Coated abrasives		Stock Removal									
			Blending & Refining								
				Deburring							
						Surface Preparation & Cleaning					
							Finishing				
BearTex							Coarse		Medium	Very Fine	



UNDERSTANDING THE APPLICATION MATRIX

For each of the 8 key application processes, the Application Matrix provides a product selection guide. Divided by material and further by product requirement (performance or economy), the guide provides a recommendation for selecting the perfect product solution.

Application:

Identify your application from each of the 8 key colour coded stages of the process.

Material:

Select from Stainless Steel, Mild Steel and Aluminium, depending on your work material.

Product Requirement:

Innovative products providing exceptionally high performance (red) and alternative economy (green) solutions.



Product Solution:

Directs you to the best product for your application requirement.

PERFORMANCE PRODUCTS WORK OPTIMALLY ON TOOLS WITH HIGHER POWER, 1200W AND ABOVE.



THE APPLICATION MATRIX

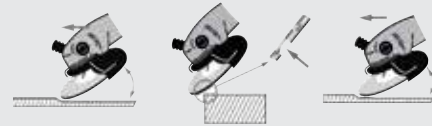
		CUTTING-OFF	HEAVY DUTY GRINDING	STOCK REMOVAL		BLENDING & RE
APPLICATION						
		<p>Cut-off wheel for correct dimensioning.</p>	<p>Grinding wheels to remove welds and burrs.</p>	<p>Flap Disc Remove heavy weld seams and excess material. Long product life.</p>	<p>Fibre Disc Remove excess material from flat and contoured surfaces.</p>	<p>Impart a uniform finish.</p>
STAINLESS STEEL	PERFORMANCE	<p>Quantum / Omega</p> <ul style="list-style-type: none"> • 1mm for clean and precise cutting • Premium grain and bond for high stability and less dust • Time saving 	<p>NEW Quantum 3</p> <ul style="list-style-type: none"> • Premium Ceramic grains • Best G-ratio • High performance rough applications • High material removal rate 	<p>Quantum</p> <ul style="list-style-type: none"> • Ceramic SG® abrasive for maximum performance • Aggressive, consistent cooler cut • Long life 	<p>Quantum</p> <ul style="list-style-type: none"> • Ceramic SG® abrasive for maximum performance • Aggressive, consistent cooler cut 	<p>Vortex RapidBlend Disc</p> <ul style="list-style-type: none"> • Versatile, cut and fini one disc • High performance gra blending operations • Long life and comforta
	ECONOMY	<p>Vulcan</p> <ul style="list-style-type: none"> • Good cutting performance • Straight and quick cutting 	<p>Vulcan</p> <ul style="list-style-type: none"> • Good material removal rate • Hard and soft wheels available • Suitable for a number of applications 	<p>Omega</p> <ul style="list-style-type: none"> • Ideal for mid to heavy duty applications on stainless steel 	<p>F827 Norzon</p> <ul style="list-style-type: none"> • High and regular cut rate • Good price vs. performance ratio 	<p>Vortex RapidPrep (SCM)</p> <ul style="list-style-type: none"> • Good performance an • Open structure resists • Various grades availa different blending sty
MILD STEEL	PERFORMANCE	<p>Quantum / Omega</p> <ul style="list-style-type: none"> • 1mm for clean and precise cutting • Premium grain and bond for high stability and less dust • Time saving 	<p>NEW Quantum 3</p> <ul style="list-style-type: none"> • Premium Ceramic grains • Best G-ratio • High performance rough applications • High material removal rate 	<p>Omega</p> <ul style="list-style-type: none"> • 100% NorZon grain for high stock removal • Heavy cloth backing controls wear, increasing product life 	<p>Quantum</p> <ul style="list-style-type: none"> • Ceramic SG® abrasive for maximum performance • Aggressive, consistent cooler cut 	<p>Vortex RapidBlend Disc</p> <ul style="list-style-type: none"> • Versatile, cut and fini one disc • High performance gra blending operations • Long life and comforta
	ECONOMY	<p>Vulcan</p> <ul style="list-style-type: none"> • Good cutting performance • Straight and quick cutting 	<p>Vulcan</p> <ul style="list-style-type: none"> • Good material removal rate • Hard and soft wheels available • Suitable for a number of applications 	<p>Vulcan Zirconia</p> <ul style="list-style-type: none"> • Good stock removal • Comfortable working 	<p>F827 Norzon</p> <ul style="list-style-type: none"> • High and regular cut rate • Good price vs. performance ratio 	<p>Vortex RapidPrep (SCM)</p> <ul style="list-style-type: none"> • Good performance an • Open structure resists • Various grades availab blending
ALUMINIUM	PERFORMANCE	<p>Norline</p> <ul style="list-style-type: none"> • Ultra thin for precise cut • High performance Aluminum Oxide grain for fast cut 	<p>Norline</p> <ul style="list-style-type: none"> • Sharp Aluminium Oxide grain for fast material removal • Prevents clogging • Smooth finish achieved 	<p>Omega</p> <ul style="list-style-type: none"> • 100% NorZon grain for high stock removal • Heavy cloth backing controls wear, increasing product life 	<p>F827 Norzon</p> <ul style="list-style-type: none"> • Excellent performance on hard aluminium alloys 	<p>Vortex RapidBlend Disc</p> <ul style="list-style-type: none"> • Versatile, cut and fini one disc • High performance gra blending operations • Long life and comfortab
	ECONOMY	—	—	<p>Vulcan Zirconia</p> <ul style="list-style-type: none"> • Good stock removal • Comfortable working 	<p>F100 Fibre Disc</p> <ul style="list-style-type: none"> • Aluminium Oxide grain for good cut rate on soft aluminium alloys 	<p>Vortex RapidPrep (SCM)</p> <ul style="list-style-type: none"> • Good performance an • Open structure resists • Various grades availab different blending sty

FINING	DEBURRING	SURFACE PREPARATION & CLEANING	FINISHING	POLISHING
				
	Remove burrs, radiusing and break sharp edges.	Remove dirt, rust or corrosion and prepare surface prior to coating or welding.	Reduce surface roughness, apply a cosmetic finish, prepare for polishing.	Final step to provide a high gloss finish.
sh with in for all ble handling	Vortex RapidBlend Disc <ul style="list-style-type: none"> Tight, unitized construction resists loading when deburring Fast removal of surface defects Long life 	Blaze RapidStrip Disc <ul style="list-style-type: none"> High performance Ceramic grain for 2x faster cut & longer life Surface condition, strip and clean with one disc 	RapidBlend NEX-SF Disc <ul style="list-style-type: none"> Imparts a high quality, shiny surface finish Ideal choice for finishing prior to polishing and paint preparation 	RapidPolish disc <ul style="list-style-type: none"> Felt wool polishing pad for a high shine finish Use with or without polishing compound or paste
Disc d life loading le for	Rapid Prep (SCM) Disc <ul style="list-style-type: none"> Good performance Open structure resists loading Coarse grades available for deburring 	RapidStrip Disc <ul style="list-style-type: none"> Aggressive, controlled cut Easy cleaning on uneven contoured surfaces 	Rapid Prep (SCM) Disc <ul style="list-style-type: none"> Medium to fine grades for finishing and pre-polishing Open structure resists loading 	—
sh with in for all ble handling	Vortex RapidBlend Disc <ul style="list-style-type: none"> Tight, unitized construction resists loading when deburring Fast removal of surface defects Long life 	Blaze RapidStrip Disc <ul style="list-style-type: none"> High performance Ceramic grain for 2x faster cut & longer life Surface condition, strip and clean with one disc 	RapidBlend NEX-SF Disc <ul style="list-style-type: none"> Imparts a high quality, shiny surface finish Ideal choice for finishing prior to polishing and paint preparation 	RapidPolish disc <ul style="list-style-type: none"> Felt wool polishing pad for a high shine finish Use with or without polishing compound or paste
Disc d life loading le for	Rapid Prep (SCM) Disc <ul style="list-style-type: none"> Good performance Open structure resists loading Coarse grades available for deburring 	RapidStrip Disc <ul style="list-style-type: none"> Aggressive, controlled cut Easy cleaning on uneven contoured surfaces 	Vortex RapidPrep (SCM) Disc <ul style="list-style-type: none"> Medium to fine grades for finishing and pre-polishing Open structure resists loading 	—
sh with in for all le handling	Beartex High Strength Disc <ul style="list-style-type: none"> Open structure prevents loading when deburring High strength nylon for longer life in contoured applications 	High Strength Disc <ul style="list-style-type: none"> Durable construction for fast surface preparation and cleaning Imparts a good surface for final finishing operations 	RapidBlend NEX-SF Disc <ul style="list-style-type: none"> Imparts a high quality, shiny surface finish Ideal choice for finishing prior to polishing and paint preparation 	RapidPolish disc <ul style="list-style-type: none"> Felt wool polishing pad for a high shine finish Use with or without polishing compound or paste
Disc d life loading le for	Rapid Prep (SCM) Disc <ul style="list-style-type: none"> Good performance Open structure resists loading Coarse grades available for deburring 	RapidStrip Disc <ul style="list-style-type: none"> Aggressive, controlled cut Easy cleaning on uneven contoured surfaces 	Vortex RapidPrep (SCM) Disc <ul style="list-style-type: none"> Medium to fine grades for finishing and pre-polishing Open structure resists loading 	—

SAFETY ADVICE

Portable Grinders - Grinding Rough Work

- Do not use a cutting-off wheel for grinding
- Do not work with the side of a wheel, you will cut the reinforcing cloths. A grinding wheel can be used on all sides safely. A cutting wheel should be used only on 90°.
- Work at an angle of 10 to 30° with a longitudinal action



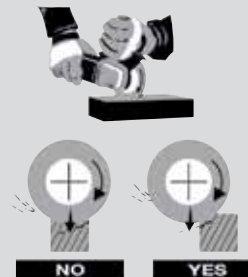
Grinding Finishing Work

- Angle of work 30° to 45°
- Rotary action



Cutting-Off

- Arrange the workpiece so that a uniform section can be cut. Clamp the material tightly. Any movement will give vibrations, influence the straightness of the cut and the life of the wheel.



Personal Protection

Safety goggles, ear defenders, safety gloves, dust masks and, if conditions are severe, additional face protection. Leather aprons and safety shoes must be worn.



Wear a mask



Wear protective gloves



Wear eye protection



Wear ear protection



Refer to instruction manual/booklet



Wear double eye protection



Do not use for face grinding



Do not use if damaged

UNDERSTANDING THE PROCESS GUIDE

The following pages focus on 5 common processes using an angle grinder in the metal fabrication market. The clear, visual layout and technical commentary is designed to show all recommended products at a glance. Through our technical expertise, we have selected performance products to demonstrate the most effective solution. Alternative economy solutions can be found in the product index starting on page 22.

Application Matrix:

Found at the top of each page, shows the application stages involved in each process.

Product Recommendation:

A product is recommended for each application stage. 'Before' and 'after' application images show the product in use.



PROCESS GUIDE: WELD REMOVAL TO A COMMERCIAL FINISH IN 3 STEPS

HEAVY DUTY GRINDING

QUANTUM 3 / OMEGA



BEFORE

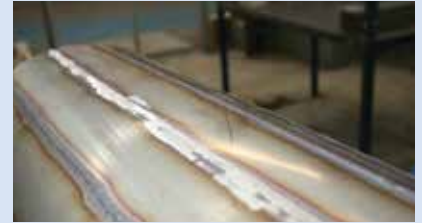


STOCK REMOVAL

QUANTUM FIBRE DISC P50



BEFORE



AFTER



AFTER

BLENDING & REFINING

VORTEX RAPIDBLEND



BEFORE

- Remove the excess weld with a Norton Quantum 3 or Omega grinding wheel at a 30-45° angle.
- The grinding discs create a very coarse surface finish so leave a small amount of weld on the surface.



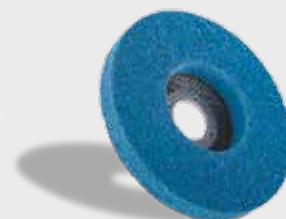
NEW PERFORMANCE ADVANTAGE

- Use a Norton Quantum fibre disc in grit P50 at a 10 to 15° angle to remove the weld quickly and produce a workable surface finish.
- Use an Air-cooled back-up pad for longer life and aggressive stock removal with grits P36 and P50. Nylon back-up pads also available, see page 26 for details.



AFTER

- The Vortex RapidBlend 5AM disc removes grind lines left on the surface by the fibre disc.
- Vortex RapidBlend is designed for light stock removal, ideal for blending applications.
- The bright finish left by Vortex can be used either to impart a final finish or as an intermediate step.



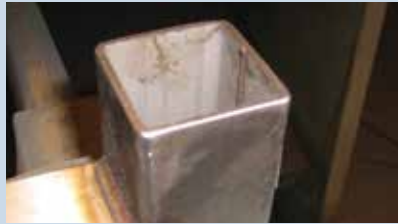
PROCESS GUIDE: CUTTING-OFF TO A COMMERCIAL FINISH IN 3 STEPS

CUTTING-OFF

QUANTUM / OMEGA



BEFORE

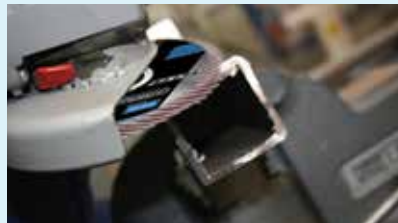


AFTER

- Use a Norton Omega or Quantum ultra thin required dimensions.
- The ultra thin wheel produces a straight, clean number of process steps.
- Comfortable to use, Omega or Quantum thin dimensions prevent the creation of burrs

STOCK REMOVAL

QUANTUM FLAP DISC P60



BEFORE



AFTER

BLENDING & REFINING

VORTEX RAPID PREP (SCM) DISC COARSE



BEFORE

wheel to cut the workpiece to the
cut and limits material loss, reducing the overall
creates less noise and dust. The ultra
which can occur when using thicker wheels.



- The high performance Ceramic® grain of Norton Quantum flap discs maximise stock removal providing aggressive, consistent cutting action.
- The abrasive flaps allow a more contoured impact compared with a fibre disc, offering conformability on the workpiece edge.
- Grit P60 produces light finish lines which can be easily removed using a BearTex non-woven surface blending disc. Use a powerful angle grinder above 1200W for optimum performance.



AFTER

- Vortex Rapid Prep (SCM) Discs are comfortable to use and offer lower cut rates with finer finishing capabilities. Controlled use of the disc at a 10-15° angle prevents random scratch patterns.
- A coarse grade disc offers a blending capability that can be used in preparation for coatings (e.g.: paint) or polishing.



PROCESS GUIDE: WELD REMOVAL TO A BRIGHT FINISH

STOCK REMOVAL

QUANTUM FLAP DISC P60



BEFORE



AFTER

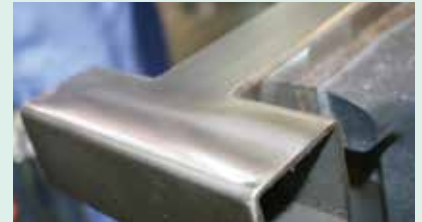
- Use a Norton Quantum flap disc in grit P60
For this particular application, a flap disc is recommended as the backing allows new, sharper grain to be exposed as the disc wears.
- As the backing is softer than that of a fibre disc, it allows for a more aggressive scratch depth and reduce the number of passes required.

BLENDING & REFINING

VORTEX RAPID PREP (SCM) DISC COARSE



BEFORE



AFTER

FINISHING

RAPIDBLEND NEX-2SF



BEFORE

for weld and stock removal.
 commended as the constant erosion
 exposed, providing longer product life.
 sc, the surface finish will have a lower
 ess stages.



- Vortex Rapid Prep (SCM) Discs are comfortable to use and offer lower cut rates with finer finishing capabilities.
- Controlled use of the disc at a 10-15° angle prevents random scratch patterns occurring.
- A coarse grade disc offers the flexibility of blending, refining, scratch removal and light deburring.



AFTER

- RapidBlend NEX-2SF has a low cut rate with excellent final finishing capabilities.
- Use at a 10-15° angle and move more rapidly across the work piece to avoid heat build up.
- Ensure all scratch lines are removed before using RapidBlend NEX-2SF, as the product imparts an extremely fine, bright and shiny finish.



PROCESS GUIDE: ALUMINIUM SHEET PREPARATION FOR PAINT AND COATINGS

STOCK REMOVAL

NORZON F827 FIBRE DISC P60



BEFORE



AFTER

- Norzon F827 fibre discs are designed for use
- Use light and even pressure to optimize the
- Fibre discs reduce heat build up, cutting with
- As aluminium is a soft metal, the finish will F827 in P60, a finer grit disc should be used.

BLENDING & REFINING

VORTEX RAPID PREP (SCM) DISC MEDIUM



BEFORE



AFTER

on aluminium.
grinding process and reduce loading.
out damaging the aluminium surface.
appear very coarse. After using Norzon



- A medium Vortex Rapid Prep (SCM) Disc should be used after the fibre disc to impart a finish ready to be coated.
- The medium grade disc removes scratch patterns and allows the coating to stick without peeling.
- Do not use for weld and stock removal, as surface blending discs are for finishing processes only.
- Vortex RapidBlend is a good alternative to provide an excellent finish and minimal loading.



PROCESS GUIDE: PAINT, COATING AND CORROSION REMOVAL

SURFACE PREPARATION & CLEANING

BLAZE RAPIDSTRIP



BEFORE



AFTER

- Blaze RapidStrip discs can be used on the peeling of coating and corrosion removal with minimal effort.
- A truly versatile product, increasing the pressure of the disc.
- Comfortable to use without damaging or gouging the surface.

OR

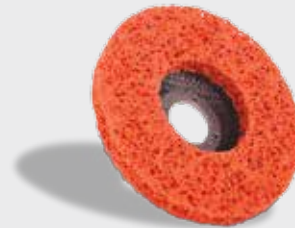
SURFACE PREPARATION & CLEANING

WIRE BRUSHES



- For extra aggression Norton wire brushes can be used.
- A range of bevel, cup and wheel brushes are available.

riphery of the workpiece at 10-15° and offers fast stock removal.
sure will provide a more aggressive cut.
ging components (as long as light pressure is applied).



be used as an alternative to Blaze RapidStrip.
available for hard to reach or flat surface areas.



PRODUCT INDEX

INNOVATION

BEST


CUTTING-OFF

STAINLESS STEEL

MILD STEEL

NORTON QUANTUM

- No wheel performs better!
- Longest life and comfortable cutting, fit for machines of 1400W or above



Product Type	DIA (mm)	TxB (mm)	SPECIFICATION	PK. QTY	ART. NO.
Type 41	115	1.0x22.23	ZA 60 ZZ	25	66252836338
		1.3x22.23	ZA 60 ZZ	25	66252836897
		1.6x22.23	ZA 46 ZZ	25	66252836339
	125	1.0x22.23	ZA 60 ZZ	25	66252836340
		1.3x22.23	ZA 60 ZZ	25	66252836898
		1.6x22.23	ZA 46 ZZ	25	66252836341
		2.0x22.23	ZA 46 ZZ	25	66252843896
	180	1.6x22.23	ZA 46 ZZ	25	66252837989
	230	1.9x22.23	ZA 46 ZZ	25	66252837990
Product Type	DIA (mm)	TxB (mm)	SPECIFICATION	PK. QTY	ART. NO.
Type 42	115	0.8x22.23	ZA 60 ZZ	25	66252840228
	125	0.8x22.23	ZA 60 ZZ	25	66252838243

PERFORMANCE


CUTTING-OFF

STAINLESS STEEL

MILD STEEL

OMEGA

- Ultra thin discs for fast, low force cutting
- Long life, quick and comfortable working



Product Type	DIA (mm)	TxB (mm)	SPECIFICATION	M/S	PK. QTY	ART. NO.
Type 41	115	1.0x22,23*	A 60 W	80	25	66253370025
		1.6x22,23	A 46 W	80	25	66253370026
		2.0x22,23	A 36 W	80	25	66253370027
		2.5x22,23	A 36 W	80	25	66253370028
	125	1.0x22,23*	A 60 W	80	25	66253370029
		1.6x22,23	A 46 W	80	25	66253370030
		2.0x22,23	A 36 W	80	25	66253370031
		2.5x22,23	A 36 W	80	25	66253370032
	150	1.6x22,23	A 46 W	80	25	66253370033
	180	1.6x22,23	A 46 W	80	25	66253370034
		2.0x22,23	A 36 W	80	25	66253370035
	230	1.9x22,23	A 36 W	80	25	66253370036
		2.0x22,23	A 36 W	80	25	66253370037
		2.5x22,23	A 36 W	80	25	66253370039
Product Type	DIA (mm)	TxB (mm)	SPECIFICATION	M/S	PK. QTY	ART. NO.
Type 42	115	2.5x22,23	A 36 W	80	25	66253370040
	125	2.5x22,23	A 36 W	80	25	66253370041
	180	2.5x22,23	A 36 W	80	25	66253370043
	230	2.5x22,23	A 36 W	80	25	66253370044

*Ultra thin wheel upgrade

ECONOMY

CUTTING-OFF

STAINLESS STEEL

MILD STEEL

VULCAN

- Good cutting performance
- Straight, quick cutting
- Excellent price / quality ratio



Product Type	DIA (mm)	TxB (mm)	SPECIFICATION	PK. QTY	ART. NO.
Type 41	115	1,0x22,23	A 60 S	25	66252925431
		1,6x22,23	A 46 S	25	66252925432
		2,5x22,23	A 30 S	25	66252925442
		3,0x22,23	A 30 S	25	66252925447
	125	1,0x22,23	A 60 S	25	66252925433
		1,6x22,23	A 46 S	25	66252925434
		2,0x22,23	A 30 S	25	66252925438
		2,5x22,23	A 30 S	25	66252925443
	150	3,0x22,23	A 30 S	25	66252925448
		2,0x22,23	A 30 S	25	66252925439
		1,6x22,23	A 46 S	25	66252925435
		2,0x22,23	A 30 S	25	66252925440
	180	2,5x22,23	A 30 S	25	66252925445
		3,0x22,23	A 30 S	25	66252925449
		1,9x22,23	A 46 S	25	66252925436
		2,0x22,23	A 30 S	25	66252925441
	230	2,5x22,23	A 30 S	25	66252925446
		3,0x22,23	A 30 S	25	66252925450
		2,5x22,23	A 30 S	25	66252925490
		3,2x22,23	A 30 S	25	66252925494
Type 42	115	2,5x22,23	A 30 S	25	66252925491
		3,2x22,23	A 30 S	25	66252925495
	125	2,5x22,23	A 30 S	25	66252925492
		3,2x22,23	A 30 S	25	66252925497
	150	2,5x22,23	A 30 S	25	66252925493
		3,2x22,23	A 30 S	25	66252925498
	180	2,5x22,23	A 30 S	25	66252925493
		3,2x22,23	A 30 S	25	66252925498

PERFORMANCE

CUTTING-OFF

ALUMINIUM

NORLINE

- Ultra thin for precise cutting
- Special bond and grit for non-ferrous applications
- No clogging, the wheel stays sharp



Product Type	DIA (mm)	TxB (mm)	SPECIFICATION	PK. QTY	ART. NO.
Type 41	115	1.6x22.23	A 30 Q	25	66252829984
	125	1.6x22.23	A 30 Q	25	66252829985
	180	2.5x22.23	A 30 Q	25	66252829983
	230	1.9x22.23	A 30 Q	25	66252829986
		2.5x22.23	A 30 Q	25	66252829987

PRODUCT INDEX

INNOVATION

BEST

HEAVY DUTY GRINDING

STAINLESS STEEL

MILD STEEL

QUANTUM 3

- Extremely aggressive cut rate
- Pure comfort
- Clean working with no burn
- Maximum stock removal



Product Type	DIA (mm)	TxB (mm)	SPECIFICATION	PK. QTY	ART. NO.
Type 27	115	7.0x22.23	NQ24P	10	66253371361
	125	7.0x22.23	NQ24P	10	66253371362
	150	7.0x22.23	NQ24P	10	66253371363
	180	7.0x22.23	NQ24P	10	66253371364
	230	7.0x22.23	NQ24P	10	66253371365

PERFORMANCE

HEAVY DUTY GRINDING

ALUMINIUM

NORLINE

- Sharp Aluminium Oxide grain for fast material removal
- No clogging, the wheel stays sharp



Product Type	DIA (mm)	TxB (mm)	SPECIFICATION	PK. QTY	ART. NO.
Type 27	125	7.0x22.23	A 30 Q	25	66252829988
	180	7.0x22.23	A 30 Q	25	66252829989
	230	7.0x22.23	A 30 Q	25	66252829990

PERFORMANCE

HEAVY DUTY GRINDING

STAINLESS STEEL

MILD STEEL

OMEGA

- Long life and high material removal in the shortest possible time: the money saving solution
- Optimized for heavy duty grinding on steel and stainless steel



Product Type	DIA (mm)	TxB (mm)	SPECIFICATION	PK. QTY	ART. NO.
Type 27	115	7.0x22.23	A 24 S	10	66253370045
	125	4.0x22.23	A 24 S	10	66253370042
		7.0x22.23	A 24 S	10	66253370046
	150	7.0x22.23	A 24 S	10	66253370047
	180	7.0x22.23	A 24 S	10	66253370048
	230	7.0x22.23	A 24 S	10	66253370050

ECONOMY

HEAVY DUTY GRINDING

STAINLESS STEEL

MILD STEEL

VULCAN

- Good material removal rate
- Hard and soft wheels available



Product Type	DIA (mm)	TxB (mm)	SPECIFICATION	PK. QTY	ART. NO.
Type 27	115	6.4x22.23	A30P	10	66252830803
		6.4x22.23	A30S	10	66252925522
		4.0x22.23	A30S	20	66252925519
	125	6.4x22.23	A30P	10	66252830804
		6.4x22.23	A30S	10	66252925523
		8.0x22.23	A30S	10	66252925524
	150	6.4x22.23	A30S	10	66252925525
		4.0x22.23	A30S	20	66252925520
		6.4x22.23	A30P	10	66252830805
	180	6.4x22.23	A30S	10	66252925526
		8.0x22.23	A30S	10	66252925527
		10.0x22.23	A30S	10	66252925528
		4.0x22.23	A30S	20	66252925521
	230	6.4x22.23	A30P	10	66252830807
		6.4x22.23	A30S	10	66252925529
		8.0x22.23	A30S	10	66252925530

PERFORMANCE

STOCK REMOVAL

STAINLESS STEEL

QUANTUM FLAP DISC

- R9% high performance ceramic flap discs for hard to grind metals
- Aggressive, consistent, cooler cut
- Long product life



Product Type	DIA x H (mm)	Grit	PK. QTY	ART. NO.
 Fibreglass backed	115x22	40	10	66254461027
		60	10	66254461029
		80	10	66254461031
	125x22	40	10	66254445878
		60	10	66254445879
		80	10	66254461033
	180x22	40	10	66254461038
		60	10	66254461036*
		80	10	66254461040*

* Made to order

PERFORMANCE

STOCK REMOVAL


MILD STEEL

ALUMINIUM

OMEGA FLAP DISC

- R828 High performance Zirconia flap discs
- Aggressive stock removal on mild steel and aluminium



Product Type	DIA x H (mm)	Grit	PK. QTY	ART. NO.
 Fibreglass backed	115x22	40	10	63642502475
		60	10	63642502476
		80	10	63642502477
	125x22	120	10	63642502478
		40	10	63642502480
		60	10	63642502483
	180x22	80	10	63642502484
		120	10	63642502485
		40	10	63642502486
		60	10	63642502487
		80	10	63642502488

PERFORMANCE

STOCK REMOVAL


MILD STEEL

ALUMINIUM

NEW R842 VULCAN ZIRCONIA FLAP DISC

- Comfortable working
- NEW R842 Norzon® Zirconia grain for good stock removal on mild steel and aluminium



Product Type	DIA x H (mm)	Grit	PK. QTY	ART. NO.
 Fibreglass backed	115x22	40	10	63642502311
		60	10	63642502312
		80	10	63642502313
	125x22	120	10	63642502314
		40	10	63642502315
		60	10	63642502317
	180x22	80	10	63642502318
		120	10	63642502326
		40	10	63642502341
		60	10	63642502343
		80	10	63642502345
		120	10	63642502347

PRODUCT INDEX

PERFORMANCE


STOCK REMOVAL

STAINLESS STEEL

MILD STEEL

QUANTUM FIBRE DISC

- F996 High performance ceramic fibre discs for heavy duty applications on hard to grind metal
- Aggressive, consistent, cooler cut



DIA x H (mm)	Grit	PK. QTY	ART. NO.
115x22	36	25	66623327494
	50	25	66623327496
	60	25	66623327497
	80	25	66623327499
	120	25	66623327500
125x22	36	25	66623327501
	50	25	66623327502
	60	25	66623327503
	80	25	66623327504
180x22	120	25	66623327505
	36	25	66623327506
	50	25	66623327507
	60	25	66623327508
	80	25	66623327509
	120	25	66623327510

ECONOMY

STOCK REMOVAL

STAINLESS STEEL

MILD STEEL

ALUMINIUM

F827 NORZON FIBRE DISC

- F827 Norzon® abrasive for high and regular cut rate
- Good price / performance ratio



DIA x H (mm)	Grit	PK. QTY	ART. NO.
115x22	24	25	69957360048
	36	25	63642539615
	50	25	69957360053
	60	25	63642539616
	80	25	63642539617
	100	25	69957360063*
	120	25	63642533055
125x22	24	25	63642539619
	36	25	63642536483
	50	25	63642539620
	60	25	69957360057
	80	25	63642539622
	100	25	63642536484
180x22	120	25	63642533056
	24	25	63642533062
	36	25	63642533063
	50	25	63642533064
	60	25	63642533065
	80	25	63642533066
	120	25	63642533067*
	120	25	63642533068

ECONOMY

STOCK REMOVAL

STAINLESS STEEL

F100 FIBRE DISC

- F100 Aluminium Oxide fibre disc for general purpose grinding & blending



DIA x H (mm)	Grit	PK. QTY	ART. NO.
115x22	16	25	66623385735
	24	25	66623385738
	36	25	66623385741
	40	25	66623385745
	50	25	66623385747
	60	25	66623385748
	80	25	66623385750
	100	25	66623385751
	120	25	66623385757
	16	25	66623385761
125x22	24	25	66623385764
	36	25	66623385768
	40	25	66623385770
	50	25	66623385773
	60	25	66623385775
	80	25	66623385776
	100	25	66623385778
	120	25	66623385779
	16	25	66623385755
	24	25	66623385758
180x22	36	25	66623385760
	40	25	66623385752
	50	25	66623385793
	60	25	66623385749
	80	25	66623385746
	100	25	66623385744
	120	25	66623385739

BACK-UP PADS: AIRCOOL

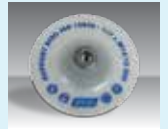
- Aluminium core and rubber coating for long life and heat resistance
- Ideal for heavy duty applications



DIA (mm)	Density	Attachment	PK. QTY	ART. NO.
115	Hard	M14	1	69957382821
125	Hard	M14	1	69957382823
178	Hard	M14	1	69957382824
	Medium	5/8	1	63642588243

BACK-UP PADS: NYLON

- Use hard density for heavy stock material with coarse grit (up to P50)
- Use medium density for finishing with grit P60 and finer or for contoured workpieces with all grit sizes



DIA (mm)	Density	Attachment	PK. QTY	ART. NO.
115	Hard	M14	5	69957382828
	Medium	M14	5	69957382825
125	Hard	M14	5	69957382829
	Medium	5/8	5	63642588341*
	Medium	M14	5	69957382826
178	Hard	M14	5	69957382830
	Medium	5/8	5	63642588345*
	Medium	M14	5	69957382827

PRODUCT INDEX

PERFORMANCE

BLENDING & REFINING

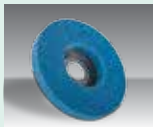
STAINLESS STEEL

MILD STEEL

ALUMINIUM

VORTEX RAPID BLEND DISCS

- Versatile product with cut, blend and finish capabilities
- Faster finishing with minimal shedding
- Consistent, comfortable performance for improved part quality with no smearing



DIAxH (mm)	CAP Code	Max RPM	Grade	Application	PK. QTY	ART. NO.
115x22	U2305	12000	Vortex 5AM	Tig weld removal	10	66254429268
125x22	U2305	12000	Vortex 5AM	Tig weld removal	10	66254496323

PERFORMANCE

BLENDING & REFINING

STAINLESS STEEL

MILD STEEL

ALUMINIUM

VORTEX RAPID PREP DISCS SCM SELF-GRIP

- 2-3 times longer life
- Fewer process stages
- Reduced rework
- Patented grain technology



DIA (mm)	CAP Code	Grade	PK. QTY	ART. NO.
115	S2103	Extra Coarse	25	66623378971
	S2203	Coarse	25	66623378974
	S2303	Medium	25	66623378977
	S2403	Fine	25	-
	S2503	Very Fine	25	66623378980
125	S2103	Extra Coarse	25	66623378972
	S2203	Coarse	25	66623378975
	S2303	Medium	25	66623378978
	S2403	Fine	25	-
	S2503	Very Fine	25	66623378981
178	S2103	Extra Coarse	25	66623378973
	S2203	Coarse	25	66623378976
	S2303	Medium	25	66623378979
	S2403	Fine	25	-
	S2503	Very Fine	25	-

ECONOMY

BLENDING & REFINING

STAINLESS STEEL

MILD STEEL

ALUMINIUM

RAPID PREP DISCS SCM (AO) SELF-GRIP

- 15% longer life
- Fewer process stages
- Reduced rework



DIA (mm)	CAP Code	Grade	PK. QTY	ART. NO.
115	S2108	Extra Coarse	25	66623378983
	S2208	Coarse	25	66623378984
	S2308	Medium	25	66623378987
	S2408	Fine	25	66623378990
	S2508	Very Fine	25	66623379028
125	S2108	Extra Coarse	25	66623378982
	S2208	Coarse	25	66623378985
	S2308	Medium	25	66623378988
	S2408	Fine	25	66623378991
	S2508	Very Fine	25	66623379029
178	S2108	Extra Coarse	25	66623378965
	S2208	Coarse	25	66623378986
	S2308	Medium	25	66623378989
	S2408	Fine	25	-
	S2508	Very Fine	25	-

ECONOMY

BACK-UP PADS FOR BEARTEX NON-WOVEN SURFACE BLENDING DISCS AND RAPID PREP (SCM) DISCS (SELF-GRIP)



DIA (mm)	Density	Attachment	PK. QTY	ART. NO.
115	Medium	M14	1	69957382846
	Medium	5/8	1	63642595937
125	Medium	M14	1	69957382841
	Medium	5/8	1	63642595938
178	Medium	M14	1	69957382844
	Medium	5/8	1	63642595940

PRODUCT INDEX

PERFORMANCE

DEBURRING

STAINLESS STEEL

MILD STEEL

VORTEX RAPID BLEND DISCS

- Versatile product with cut, blend and finish capabilities
- Faster finishing with minimal shedding
- Consistent, comfortable performance for improved part quality with no smearing



DIAxH (mm)	CAP Code	Max RPM	Grade	Application	PK. QTY	ART. NO.
115x22	U2305	12000	Vortex 5AM	Tig weld removal	10	66254429268
125x22	U2305	12000	Vortex 5AM	Tig weld removal	10	66254496323

PERFORMANCE

DEBURRING

ALUMINIUM

BEARTEX NON-WOVEN HIGH STRENGTH DISCS

- Depressed centre T27
- High strength nylon material for longer life in contoured applications
- Open structure to prevent loading



DIA x B (mm)	CAP Code	PK. QTY	Max RPM	Grade	Application	ART. NO.
115 x 22	F2303	10	12000	HSMA MEDIUM	Conformable	66261020549

BACK-UP PADS FOR BEARTEX NON-WOVEN SURFACE BLENDING DISCS AND RAPID PREP (SCM) DISCS (SELF-GRIP)



DIA x H (mm)	Density	Attachment	PK. QTY	ART. NO.
115	Medium	M14	1	69957382846
	Medium	5/8	1	63642595937
125	Medium	M14	1	69957382841
	Medium	5/8	1	63642595938
178	Medium	M14	1	69957382844
	Medium	5/8	1	63642595940

ECONOMY

DEBURRING


STAINLESS STEEL

MILD STEEL

ALUMINIUM

RAPID PREP DISCS SCM (A0) SELF-GRIP



- 15% longer life
- Fewer process stages
- Reduced rework




DIA (mm)	CAP Code	Grade	PK. QTY	ART. NO.
115	S2108	Extra Coarse	25	66623378983
	S2208	Coarse	25	66623378984
	S2308	Medium	25	66623378987
	S2408	Fine	25	66623378990
	S2508	Very Fine	25	66623379028
125	S2108	Extra Coarse	25	66623378982
	S2208	Coarse	25	66623378985
	S2308	Medium	25	66623378988
	S2408	Fine	25	66623378991
	S2508	Very Fine	25	66623379029
178	S2108	Extra Coarse	25	66623378965
	S2208	Coarse	25	66623378986
	S2308	Medium	25	66623378989
	S2408	Fine	25	-
	S2508	Very Fine	25	-

NOTE:

RAPIDPREP DISCS COME WITH REMOVEABLE CENTRE TO ALLOW MOUNTING ON BOTH TYPES OF BACK-UP PADS.



BACK-UP PADS (SELF-GRIP) WITH LOCATING CENTRE PIN



DIA (mm)	DEN-SITY	ATTACHMENT	PK. QTY	ART. NO.
115	Medium	M14	1	77696076935
125	Medium	M14	1	77696076941

PERFORMANCE

SURFACE PREPARATION
& CLEANING

STAINLESS STEEL

MILD STEEL

BLAZE RAPIDSTRIP DISCS

- Depressed centre T27
- High performance Ceramic grain for 2x faster cut & longer life
- Surface condition, strip and clean with one disc
- Extremely versatile using hard or soft pressure



DIA x B (mm)	CAP Code	PK. QTY	Max RPM	Type	ART. NO.
115 x 22	R9101	10	12000	Type 27	66623303783
125 x 22	R9101	10	11000	Type 27	66623303916
178 x 22	R9101	10	8000	Type 27	66623303920

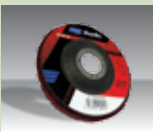
PERFORMANCE

SURFACE PREPARATION
& CLEANING

ALUMINIUM

BEARTEX NON-WOVEN HIGH
STRENGTH DISCS

- Depressed centre T27
- High strength nylon material for longer life in contoured applications
- Open structure to prevent loading



DIA x B (mm)	CAP Code	PK. QTY	Max RPM	Grade	Application	ART. NO.
115 x 22	F2303	10	12000	HSMA MEDIUM	Conformable	66261020549

ECONOMY

SURFACE PREPARATION
& CLEANING

STAINLESS STEEL

MILD STEEL

ALUMINIUM

RAPIDSTRIP DISCS

- Depressed centre T27
- Constructed with thick, strong, synthetic fibres and extra-coarse silicon carbide abrasive
- Open web construction provides fast cutting action
- Two choices available: open structure on R4104S, more dense on R4101H



DIA x B (mm)	CAP Code	PK. QTY	Max RPM	Type/ Backing	R4104S ART. NO.	R4101H ART. NO.
115 x 22	R4101	10	12000	Type 27/ Fiberglass	-	66261009649
115 x 22	R4104	5	11000	Type 27/ Fiberglass	63642585732	-
125 x 22	R4104	5	8500	Type 27/ Fiberglass	63642585749	-
178 x 22	R4104	5	6500	Type 27/ Fiberglass	63642585750	-

PRODUCT INDEX

PERFORMANCE

FINISHING

STAINLESS STEEL

MILD STEEL

ALUMINIUM

BEARTEX RAPIDBLEND
NEX-SF DISCS

- Imparts a high quality, shiny surface finish
- Ideal choice for finishing prior to polishing and paint preparation
- New 3SF now available with harder density for longer life and form holding



DIAxB (mm)	CAP Code	Max RPM	Grade	Application	PK. QTY	ART. NO.
115x22	U4401	12000	NEX2SF	Blend & Finish	10	66261020546
115x22	U4401	12000	NEX3SF	Blend & Finish	10	66254461726
125x22	U4401	12000	NEX2SF	Blend & Finish	10	66254496320

ECONOMY

FINISHING

STAINLESS STEEL

MILD STEEL

ALUMINIUM

BEARTEX NON-WOVEN
FLAP DISC

- BearTex fleece discs are ideal where high conformability is required
- Follows contours and unusual shapes when fine finishing
- Two types available - plain and mixed (interleaved) for various metals



DIAxB (mm)	CAP Code	Grade	Type	PK. QTY	ART. NO.
115x22	F2504	Very Fine A	XFLD [Plain]	10	66254481898
115x22	F2504	Very Fine A with P120	XIFD [Mixed]	10	66623311000

ECONOMY

FINISHING

STAINLESS STEEL

MILD STEEL

ALUMINIUM

RAPID PREP DISCS SCM (A0)
SELF-GRIP

- 15% longer life
- Fewer process stages
- Reduced rework



DIA (mm)	CAP Code	Grade	PK. QTY	ART. NO.
115	S2108	Extra Coarse	25	66623378983
	S2208	Coarse	25	66623378984
	S2308	Medium	25	66623378987
	S2408	Fine	25	66623378990
	S2508	Very Fine	25	66623379028
125	S2108	Extra Coarse	25	66623378982
	S2208	Coarse	25	66623378985
	S2308	Medium	25	66623378988
	S2408	Fine	25	66623378991
	S2508	Very Fine	25	66623379029
178	S2108	Extra Coarse	25	66623378965
	S2208	Coarse	25	66623378986
	S2308	Medium	25	66623378989
	S2408	Fine	25	-
	S2508	Very Fine	25	-

BACK-UP PADS FOR BEARTEX NON-WOVEN SURFACE BLENDING DISCS AND RAPID PREP (SCM) DISCS (SELF-GRIP)



DIA (mm)	Density	Attachment	PK. QTY	ART. NO.
115	Medium	M14	1	69957382846
	Medium	5/8	1	63642595937
125	Medium	M14	1	69957382841
	Medium	5/8	1	63642595938
178	Medium	M14	1	69957382844
	Medium	5/8	1	63642595940

PERFORMANCE

POLISHING

STAINLESS STEEL

MILD STEEL

ALUMINIUM

RAPID POLISH DISCS

- Type T29 made with felt wool fixed to a fibreglass plate to create a polishing pad
- Use with polishing compounds or pastes to provide a mirror finish



DIAxB (mm)	CAP Code	Grade	Type	PK. QTY	ART. NO.
115x22	F0005	Felt	XFLD (Plain)	10	66254481899
125x22	F0005	Felt	XFLD (NW)	10	63642573692

POLISHING PASTE BARS



Colour	Specification	PK. QTY	ART. NO.
Green	Non-ferrous metals	1	07660739108
White	Stainless Steel	1	07660739109
Blue	Brass	1	07660739112
Pink	Copper	1	07660739111

NOTES



PERFORMANCE SOLUTIONS FOR RIGHT ANGLE GRINDERS

CUTTING-OFF



Cut-off wheel for correct dimensioning.

HEAVY DUTY GRINDING



Grinding wheels to remove welds and burrs.

STOCK REMOVAL



Flap Disc
Remove heavy weld seams and excess material.
Long product life.



Fibre Disc
Remove excess material from flat and contoured surfaces.

BLENDING & REFIN



Impart a uniform finish.



IN THE METAL FABRICATION MARKET



www.norton.eu

Saint-Gobain Abrasives
European Headquarters
Rue de l'Ambassadeur - B.P.8
F78702 Conflans-Saint-Honorine
France

Tel: +33 (0) 134 90 40 00
Fax: +33 (0) 139 19 89 56

Form # 3066

Norton is a registered trademark of Saint-Gobain Abrasives

