

NORTON

clipper

NORTON

clipper

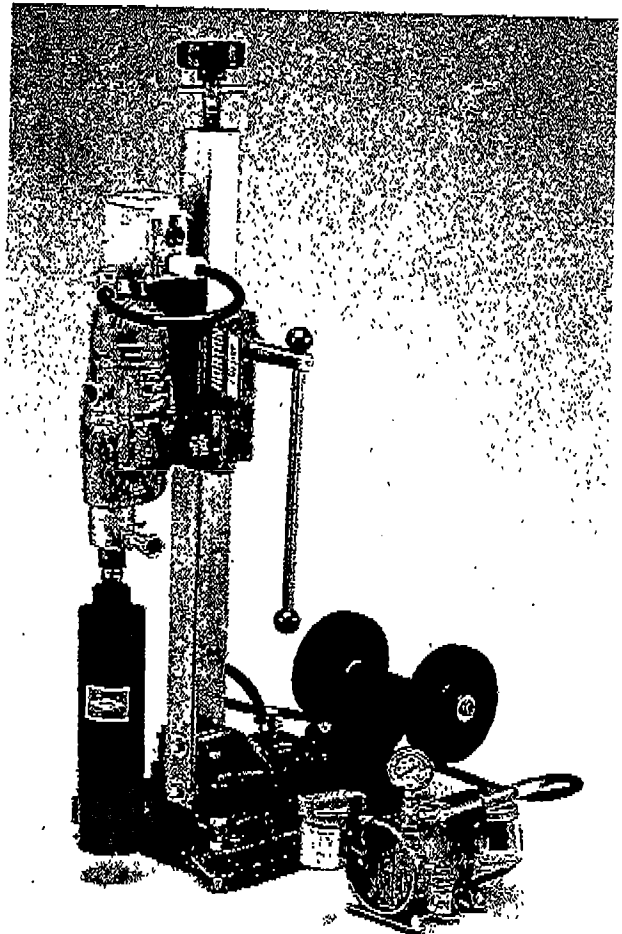
NORTON

clipper

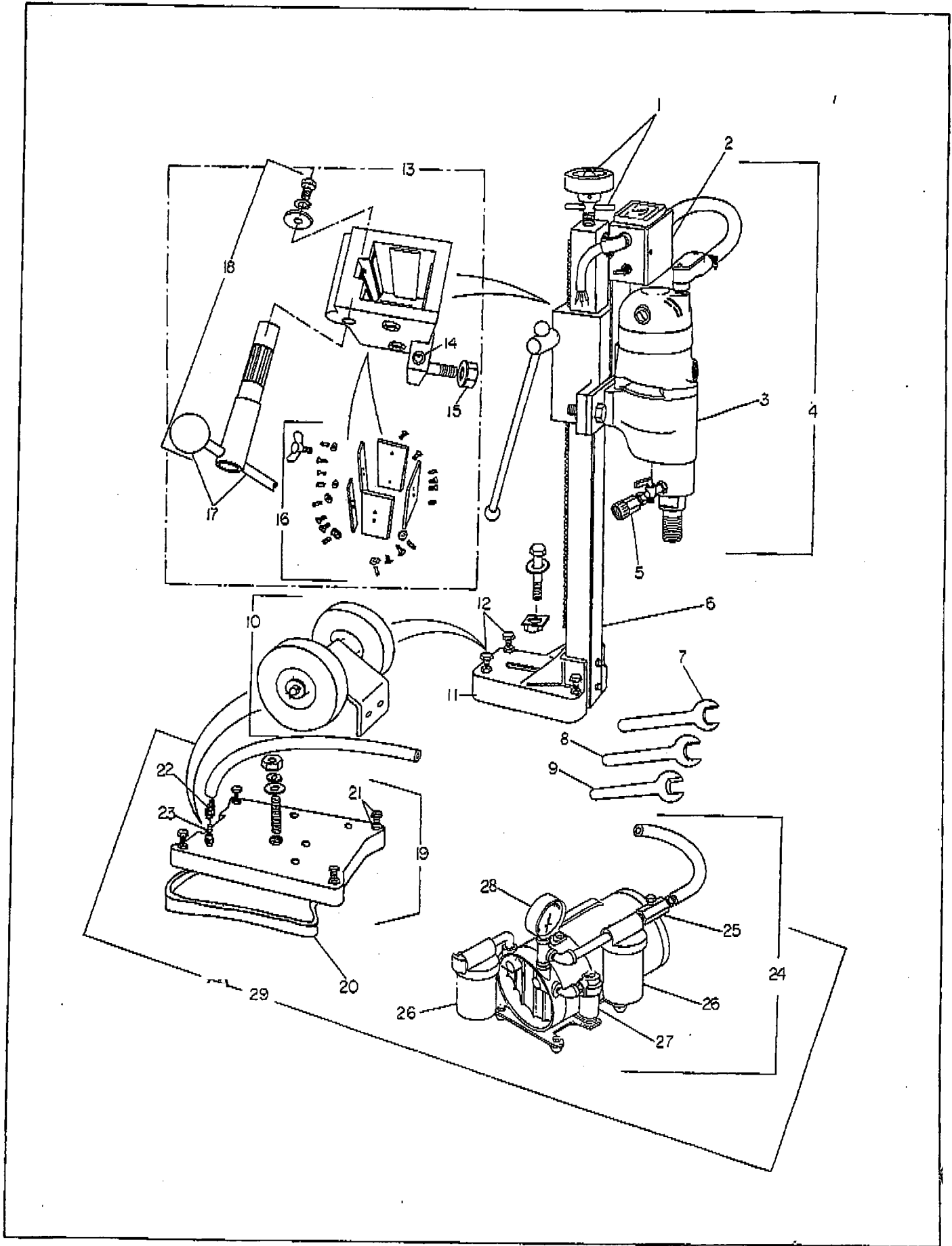
NORTON

OWNER'S MANUAL

NORTON CLIPPER MODEL CD CORE DRILL



**CD915
CD918
CD920**



ITEM NO.	DESCRIPTION	PART NO.
1	Ceiling Jack Assembly	OBS 76082
2	Switch Assembly, 115 Volt	402006
	Switch Assembly, 230 Volt	402045
3	Motor Assembly, 115 Volt, 15 Amp - MILW	402522 402003 OR 402003
	Motor Assembly, 115 Volt, 18 Amp - B&D	OBS 402039
	Motor Assembly, 230 Volt, 9 Amp - B&D	402042
	Motor Assembly, 120 Volt, 20 Amp - MILW	403064 402048
4	Motor & Switch Assembly, 115 Volt, 15 Amp - MILW	OBS 402002
	Motor & Switch Assembly, 115 Volt, 18 Amp - B&D	402009
	Motor & Switch Assembly, 230 Volt, 9 Amp - B&D	402044
	Motor & Switch Assembly, 120 Volt, 20 Amp - MILW	402051
5	Water Inlet Kit	402043
6	Drill Column	OBS 76022
7	Wrench, 3/4"	75226
8	Wrench, 15/16"	73242
9	Wrench, 1 1/8"	73243
10	Wheel Dolly	75982
11	Small Base	76070
12	Leveling Screws, Small Base (4)	76083
13	Head Assembly	76076
14	Level Bubble	73165
15	Nut Weldment	76069
16	Gib Kit (5)	76079
17	Handle Assembly	76023
18	Pinion & Handle Assembly	76078
19	Vacuum Holddown Base Assembly	74307
20	Vacuum Seal	73169
21	LEVELING SCREWS (4)	76064
22	Quick Disconnect, Female	73171
23	Quick Disconnect, Male	73170
24	Vacuum Pump Assembly 115/60/1	402054
25	Check Valve	402706
26	Filter Jar (1)	402717
27	Oil Jar	402725
28	Vacuum Gauge	407059 40201
29	Vacuum Holddown Kit 115/60/1	402041