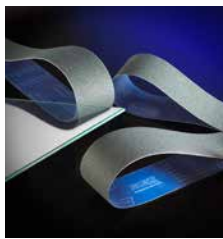




APPLICATION GUIDE
FOR NORTON AND AUTHORIZED DISTRIBUTOR PERSONNEL USE ONLY

ENGINEERED ABRASIVE SOLUTIONS FOR POLISHING APPLICATIONS

- Drive cost out of your finishing process with Norton NORaX belts that provide 2X - 5X longer life, higher quality finish, faster cut rate, and an ability to skip finishing steps
- Create more consistent finishes on all types of materials with our engineered-patterned abrasive
- Produce quality parts with consistent final finish vs. conventional abrasive belts



▼ **FEPA GRADING SYSTEM**

	P80	P150	P180	P220	P320	P400	P600	P800	P1200	P3000
A/O	X200	X100	X65	X30	X16	X4				
S/C	X210	X110	X80	X45	X22	X5				
			X90							

▲ **NORaX GRADING SYSTEM**



FEATURED PRODUCTS

Norton NORaX U936 ceramic Y-wt., used wet

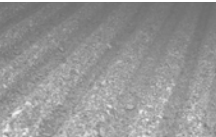
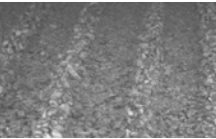
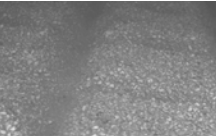
- Perfect for your high pressure applications; unique pattern provides more abrasive contact
- Maintain more consistent finishes and higher cut rate with high-performance Norton ceramic grain
- Ideal grit range for your dimensioning, centerless, and similar applications

Norton NORaX U464, silicon carbide X-wt., used dry and Norton NORaX U466 silicon carbide, Y-wt., used wet

- Best options for glass seaming
- Accommodate dry or wet sanding
- Achieve a consistent finish with our micron-graded silicon carbide grain

Norton NORaX U243 aluminum oxide J-wt., used wet

- Produce more precise finishes, even on intricate contours, with our flexible backing
- Cool cutting delivered by a heat-reducing grinding aid



Availability

CAP CODE	ABRASIVE	BACKING	GRIT OFFERING	USAGE
U243	A/O	J-wt.	x80, x65, x45, x30, x22, x16	Dry
U234	A/O	X-wt.	x100, x80, x65, x45	Dry
U254	A/O	X-wt.	x100, x80, x65, x45, x30, x22, x16, x5	Dry
U264	A/O	X-wt.	x200, x100, x80, x65, x45, x30, x22, x16	Dry
U336	A/O	Y-wt.	x65, x45, x30, x22, x16	Wet
U366	A/O	Y-wt.	x100, x65, x45, x20, x22, x16, x5	Wet
U464	S/C	X-wt.	x110, x90, x70	Dry
U466	S/C	Y-wt.	x210, x110, x90, x70	Wet
U936	Ceramic	Y-wt.	x200, x100, x65, x45, x30, x16	Wet

Product Selection by Machine/Material

MATERIAL/ MACHINE TYPE	SPECIFICATION RECOM- MENDATION	ROBOTIC	PORTABLE FILE BELT	PNEUMATIC DRUM	ROLL GRINDER			STROKE SANDER	PLATEN SANDER	BACKSTAND	CENTERLESS		
					Slack	Dry	Wet				Slack	Dry	Wet
CARBON STEEL	Starting Spec	U243	U936	U243	U254	U336	U936	U243	U264	U243	U254	U936	U936
	Optional Spec	U264	U336	U264	U243	U234	U336	U264		U264		U336	U336
STAINLESS STEEL	Starting Spec	U243	U936	U243	U254	U336	U936	U243	U264	U243	U254	U936	U936
	Optional Spec	U264	U336	U264	U243	U234	U336	U264		U264		U336	U336
CHROME	Starting Spec	U243	U936	U243	U254		U936	U243	U264	U243	U254	U936	U936
	Optional Spec	U264	U336	U264	U243		U336	U264		U264		U336	U336
COBALT CHROME	Starting Spec	U243	U936	U243	U254		U936	U243	U264	U243	U254	U936	U936
	Optional Spec	U264	U336	U264	U243		U336	U264		U264		U336	U336
GRAPHITE	Starting Spec	U366	U366	U366	U366			U366	U366	U366	U366	U366	U366
NICKEL	Starting Spec	U243	U936	U243	U254		U936	U243	U264	U243	U254	U936	U936
	Optional Spec	U264	U336	U264	U243		U336	U264		U264		U336	U336
TITANIUM	Starting Spec		U464	U464	U464		U466	U464	U464	U464	U464		U466
CERAMIC	Starting Spec		U464	U464	U464	U464	U466	U464	U464	U464	U464		U466
GLASS	Starting Spec		U464	U464	U464	U464	U466	U464	U464	U464	U464		U466



BEST – NORTON NORaX

BETTER – Defer to BEST Product

GOOD – Defer to BEST Product

facebook.com/NortonIndustrial | youtube.com/NortonIndustrial | nortonabrasives.com

USA CUSTOMER SERVICE:

Toll Free Phone: 1 (800) 551-4413
Toll Free Fax: 1 (800) 551-4416

CANADA CUSTOMER SERVICE:

Toll Free Phone: 1 (800) 263-6565
Toll Free Fax: 1 (800) 561-9490

PRIMARY SPONSOR



FORM #8347 REV. 07/16

© Saint-Gobain July 2016.

Norton, NORaX and "Reshaping Your World" are registered trademarks of Saint-Gobain Abrasives.