



Spot Repair Done Right

**Quality performance
with maximum protection**

REVvive by RSG Aerosols bring performance and quality together for the ideal spot repair solution. With a comprehensive line that offers maximum corrosion protection with minimal coats, REVvive by RSG is the answer for a spray gun surface finish with the convenience of an aerosol application.



Cavity Wax

REVvive by RSG Cavity Wax is an OEM-approved coating for internal body panels, structural components, and new replacement parts to protect against corrosion.

Cavity Wax

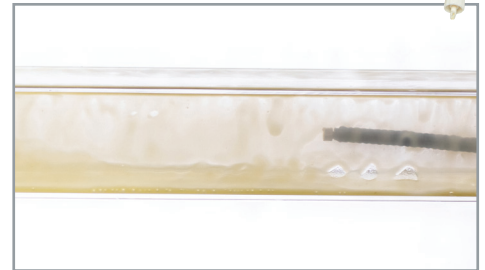
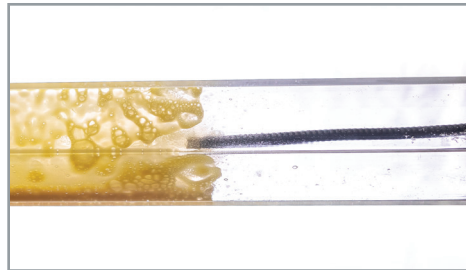
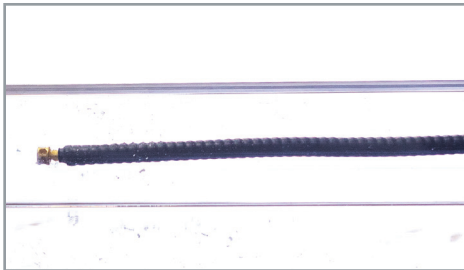
- OEM approved corrosion protection for cavities and inner body panels
- Excellent crevice penetration
- Dries firm to touch with a slight tack
- Convenient aerosol can eliminates the need for spray equipment

PART #	SIZE	CASE QUANTITY
666233 91022	13.75 oz	12

Cavity Wax Applicator Wand

- Flexible design makes reaching difficult areas easy
- 360° tip designed for outstanding coverage
- Reduces mess

PART #	CASE QUANTITY
666233 91023	1



Take RSG for a Test Drive

Refinish Solutions Group has complete confidence in our superior performing refinishing products that we invite you to put us to the test. It's an effortless way for you to be the judge. There's nothing to lose, but a lot to gain by participating in a RSG test Drive.

Contact us today to set up your test drive <https://rsg-na.com/testdrive>



Proven Corrosion Protection

REVvive by RSG E-Coat outperforms the leading competitor in an ASTM standard salt spray test.



For safety and technical data please reference the SDS and TDS sheets.



Coatings

REVvive by RSG Coatings are ideal for restoring the original appearance in a cleaner, durable, corrosion-free solution that can be used on almost any surface.



E-Coat

- Super durable coating provides outstanding corrosion protection
- Used as DTM primer or as a single coating to match the original OEM appearance
- Compatible with most basecoats
- Excellent adhesion over bare metal and paints and primers



Substrates:

Can be applied to prepared OEM-painted surfaces, aluminum, bare steel, galvanized, SMC, fiberglass, and polyester body filler.

PART #	SIZE	COLOR	CASE QUANTITY
66623391015	12.6 oz	BLACK	6
66623391016	12.7 oz	GRAY	6
66623391017	12.8 oz	OLIVE GREEN	6
66623391018	12.7 oz	LIGHT GREEN	6
66623391019	12.9 oz	TAN	6
66623391025	12.4 oz	WHITE	6
66623391026	11.9 oz	OLIVE BROWN	6
66623391027	11.9 oz	DARK GREEN	6
66623391028	11.9 oz	FIELD DRAB	6



Dry Guide Coat

- Identifies surface defects when sanding fillers or primers
- Convenient aerosol application provides no waste and clean-up
- Dries instantly
- Does not clog abrasives
- Use when dry or wet sanding

PART #	SIZE	COLOR	CASE QUANTITY
66623391008	10.9 oz	Black	6

Substrates:

Can be applied to prepared OEM-painted surfaces, fiberglass, and polyester body filler.



Trim Black

- Restores trim back to original condition
- No adhesion promoter required
- Excellent coverage
- Maintains flexibility

PART #	SIZE	COLOR	CASE QUANTITY
66623391013	10.9 oz	Satin Black	6
66623391014	11 oz	Matte Black	6

Substrates:

Can be applied to OEM-painted surfaces, lightly abraded E-Coat, TPO, EDPM, and polypropylene.



Rocker Panel Texture Coat

- A textured, durable coating to protect against stone chips, salt, damp and rust
- Includes two nozzles to recreate a variety of OEM textures
- Apply directly to sanded bare metal (for use on aluminum or galvanized, REVvive BY RSG Acid Etch Primer is recommended)
- High Build formulation covers seams and weld areas

PART #	SIZE	COLOR	CASE QUANTITY
66623391011	13.2 oz	GRAY	6
66623391012	12.8 oz	BLACK	6



Substrates:

OEM-painted surfaces, SMC, fiberglass, lightly abraded E-Coat, polyester body fillers, properly prepared bumper covers, prepared metal surfaces. It is not recommended to use REVvive by RSG Rocker Panel Texture Coat on thermoplastics.

For optimal results Direct-to-Metal, apply after sanding with 180- 240 grit sandpaper, 1-2 light even coats of Acid Etch Primer aerosol and allow 30 minutes drying time before applying.



Premium Rubberized Undercoating

- Fast drying, paintable rubberized undercoating protects against stone chips and abrasion
- Non-sag, high rubber content coating with excellent build
- Texture matches OEM appearance
- Suited for wheel wells, trunks, lower body panels and underbodies
- Assists with sound deadening



PART #	SIZE	COLOR	CASE QUANTITY
66623391029	17.7 oz	BLACK	6



Substrates:

Bare metal or primed steel and aluminum (coated metal)

Adhesion Promoter

- Liquid primer to improve the adhesion of automotive attachment tapes to exterior and interior trims involving injection molded and/or plastics (TPO, PPO, PP, PC, etc.)
- Convenient dauber style container neatly dispenses the ideal amount of product for optimal adhesion

PART #	SIZE	COLOR	CASE QUANTITY
66623391030	4 oz. Dauber	Opaque	6



Substrates:

Injection molded and/or plastics (TPO, PPO, PP, PC, etc.)



Cleaners

Cleaners from REVvive by RSG eliminate contaminants on all surfaces for a completely clean finish.

Surface Degreaser

- Anti-static, anti-silicone degreaser
- Wipes clean without leaving surface residue
- Fast evaporating and ideal for spot repairs
- Use on bare metal and painted surfaces

PART #	SIZE	COLOR	CASE QUANTITY
66623391009	9.9 oz	Opaque	6



Substrates:

Direct to metal, prepared OEM paint surfaces, aluminum, galvanized, SMC, fiberglass, lightly abraded E-Coat



Primers

REVvive by RSG presents a full line of Primers with exceptional adhesion and corrosion protection in an easy-to-sand, fast drying solution for all repairs.

Weld-Thru Primer

- Excellent adhesion
- High concentration of zinc for greater corrosion protection
- Superior conductivity while Resistance Spot, MIG and TIG welding
- Fast drying for maximum efficiency

PART #	SIZE	COLOR	CASE QUANTITY
Zinc Weld-Thru Primer			
666233 91000	12.5 oz	Gray	6

Substrates:

Can be applied direct to metal, galvanized steel and aluminum.

Universal Primer

- Direct adhesion to both metal and flexible plastics
- Fast drying and easy to sand- ideal for small rub-through areas and localized repairs
- No adhesion promoter or etch primer required
- Can be top-coated with most water or solvent-based paints

PART #	SIZE	COLOR	CASE QUANTITY
666233 91003	11.2 oz	Gray	6

Substrates:

Can be applied to prepared OEM-painted surfaces, Aluminum, galvanized steel, directly on to metal, SMC, fiberglass, lightly abraded E-Coat, TPO, EDPM, polypropylene.

High Build Primer

- Fills uneven surfaces prior to topcoating
- Ideal for spot repairs
- Includes 2 nozzles - flat fan and round for versatility in film build
- Easy to sand

PART #	SIZE	COLOR	CASE QUANTITY
666233 91007	12 oz	Gray	6

Substrates:

Can be applied directly to metal, prepared OEM painted surfaces, aluminum, galvanized steel, SMC, fiberglass, lightly abraded e-Coat, polyester body fillers, GRP.

Acid Etch Primer

- One step etch and prime formula prevents corrosion and promotes paint adhesion
- For use priming bare metal surfaces
- Ideal for rub-throughs
- No sanding required- can be directly topcoated

PART #	SIZE	COLOR	CASE QUANTITY
666233 91010	12.9 oz	Gray	6

Substrates:

Can be applied to fully cured paint, Aluminum, galvanized & zinc-coated steel, bare steel, polyester body fillers, GRP.



Aerosol Selector Chart

PART #	DESCRIPTION	SIZE (OZ)	COLOR	SHAKE TIME (MINUTES)	COATS (@ 10")	FLASH TIME (MIN. BETWEEN COATS)	COVERAGE (SQ FT/UNIT)	DRY TIME (MINUTES)	SANDING (DRY/WET)	DRY BUILD (MIL)	MIR
Primers											
66623391000	Zinc Weld-Thru	12.5	Zinc	2	1-2	5-10	53.8	10-20	180-220/180-220	0.39	WTP: 1.00
66623391003	Universal	11.2	Gray	2	1-2	3-5	48.4	15-20	400-600/600-800	0.59	ABP: 0.95
66623391007	High Build	12	Gray	2	1-2	5-10	21.5	60	400-600/600-800	1.77	ABP: 0.95
66623391010	Acid Etch Primer	12.9	Gray	2	1-2	3-5	48.4	10-20	400-600/600-800	0.59	ABP: 0.95
Coatings											
66623391008	Dry Guide Coat	10.9	Black	2	1	—	—	Immediately	As Needed	—	FPP: 0.80
66623391013	Satin Trim Black	10.9	Black	2	1-2	3-5	48.4	20-30	—	0.59	ABT: 1.70
66623391014	Matte Trim Black	11	Black	2	1-2	3-5	48.4	20-30	—	0.59	ABT: 1.70
66623391015	e-Coat	12.6	Black	2	1-2	10	59	20-30	—	0.60	ABP: 0.95
66623391016	e-Coat	12.7	Gray	2	1-2	10	59	20-30	—	0.60	ABP: 0.95
66623391017	e-Coat	12.8	Olive Green	2	1-2	10	59	20-30	—	0.60	ABP: 0.95
66623391018	e-Coat	12.7	Light Green	2	1-2	10	59	20-30	—	0.60	ABP: 0.95
66623391019	e-Coat	12.9	Tan	2	1-2	10	59	20-30	—	0.60	ABP: 0.95
66623391025	e-Coat	12.4	White	2	1-2	10	59	20-30	—	0.60	ABP: 0.95
66623391026	e-Coat	11.9	Olive Brown	2	1-2	10	59	20-30	—	0.60	ABP: 0.95
66623391027	e-Coat	11.9	Dark Green	2	1-2	10	59	20-30	—	0.60	ABP: 0.95
66623391028	e-Coat	11.9	Field Drab	2	1-2	10	59	20-30	—	0.60	ABP: 0.95
66623391011	Rocker Panel Texture Coat	13.2	Gray	2	1-2	10-15	43	180-240	—	1.97	ABP: 0.95
66623391012	Rocker Panel Texture Coat	12.8	Black	2	1-2	10-15	43	180-240	—	1.97	ABP: 0.95
66623391029	Premium Rubberized Undercoating	17.7	Black	2	2-3	5-10	15	60-120	—	1.5 to 2.0	—
66623391030	Adhesion Promoter Dauber	4	Opaque		1	—	—	5	—		
Cleaners											
66623391009	Surface Degreaser	9.9	Clear	2	1	—	—	Immediately	—	—	Exempt
Cavity Wax											
66623391022	Cavity Wax	13.75	Amber	1	1-2 at 12"	—	60-80	Immediately	—	—	0.587
66623391023	Applicator Wand	30"	Black	—	—	—	—	—	—	—	—

Many substrates need to be properly prepared before application for proper adhesion. Please refer to the corresponding TDS before beginning any repair.



An Initiative of Saint-Gobain

www.refinishsolutionsgroup.com | 1 (800) 456-8444 | Email: rsg@saint-gobain.com

FORM #8757 REV. 04/23

© Saint-Gobain April 2023..

Carborundum, Farecla, Norton, Solar Gard, REVvive, and "Refinish Solutions Group" are trademarks of Saint-Gobain Abrasives. All other trademarks are the property of their respective owners. Vehicle image provided courtesy of Ford Motor Company.