

Farécla | SURFACE FINISHING
SPECIALISTS



QUICK AND EASY

The Farécla system of compounds and waxes is designed to achieve a perfect finish on painted and gel coat surfaces.

A full line of cutting and polishing compounds, along with application accessories, will enhance the highest-level shine. Farécla compounds contain a unique abrasive technology that removes sanding marks permanently, avoiding costly reworks.

Protect that shine with a polymer UV wax that is water-resistant and protects against harmful UV rays keeping that ultimate gloss. Perform better with Farécla, the system that provides a highly polished performance.

STEP ONE

COMPOUNDING

1
Step 1:
CUT

2
Step 2:
FINISH

3
Step 3:
PROTECT

Gel Coat Surfaces

Profile Select 200 Liquid Compound

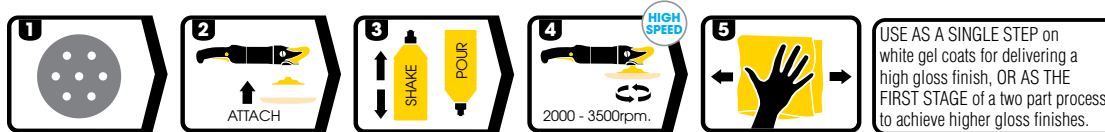
Profile Select Liquid Compound performs best on a twisted wool compounding pad at high speeds of 2000 - 3500 RPM. A great value, swirl-free, versatile cutting compound aimed at OEM applications. Profile Select Liquid Compound removes P800 or finer sanding marks from tooling or production gel coats in a single step. For painted surfaces use a wool pad to quickly remove sanding marks up to P1500 and enhance with Profile Finish if desired. It's clean in use, and loads application pads evenly for a fine shine.

PART #	FARECLA PART #	SIZE	CASE QTY
780727 00168	PRS101	1 Liter	6
780727 00169	PRS106	1 Gallon	2
780727 29473	PRS506	5 Gallon	1

TECHNICAL INFORMATION

APPEARANCE	VISCOSITY	VOC CONTENT	RELATIVE DENSITY	PH	PAINT TYPE COMPLIANCE
White-colored liquid	Medium	152 g/L	0.95	8 - 9	Gel coat surfaces

HOW TO USE



CUT ☐

GLOSS ☐

Painted and Gel Coat Surfaces

Profile 350 Premium Liquid Compound

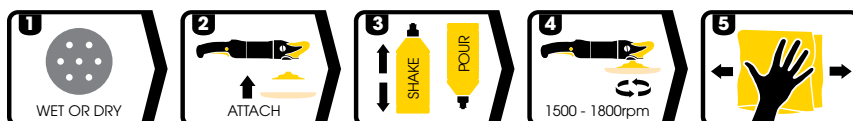
For gel coats or painted finish surfaces the Profile Premium Liquid Compound is ideal for removing sanding marks of P1200 and finer. It's also the perfect solution in restoring oxidized and weathered gel coat surfaces, and works great on dark color too.

PART #	FARECLA PART #	SIZE	CASE QTY
780727 63911	PRL112	1 Liter	6
780727 64005	PRL118	1 Gallon	2

TECHNICAL INFORMATION

APPEARANCE	VISCOSITY	VOC CONTENT	RELATIVE DENSITY	PH	PAINT TYPE COMPLIANCE
White - thick liquid	High	266 g/L	1.15	7 - 8	Marine gel coats, wood, aerospace, motor homes

HOW TO USE



STEP ONE

COMPOUNDING

1
Step 1:
CUT

2
Step 2:
FINISH

3
Step 3:
PROTECT

Gel Coat Surfaces

Profile Premium Coarse Cut Paste

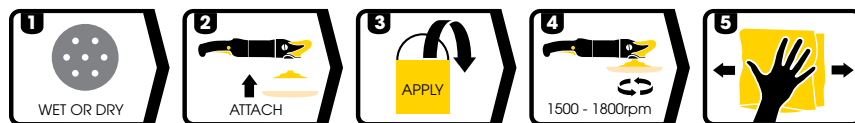
Profile Premium Coarse Cut Paste Compound takes things a step further with removing sanding marks up to P800 while leaving you with a high gloss finish. Easy to apply and with added lubrication, it resists drying out in hot conditions or on large working surfaces. It is often used as the sole compound on white gel coats.

PART #	FARECLA PART #	SIZE	CASE QTY
780727 64019	PRP306	3 kg pail	4

TECHNICAL INFORMATION

APPEARANCE	VISCOSITY	VOC CONTENT	RELATIVE DENSITY	PH	PAINT TYPE COMPLIANCE
White colored paste	High	0 g/L	1.65	10	Marine gel coats, wood, aerospace, motor homes

HOW TO USE



Profile 100 Extra Heavy Cut Paste Compound

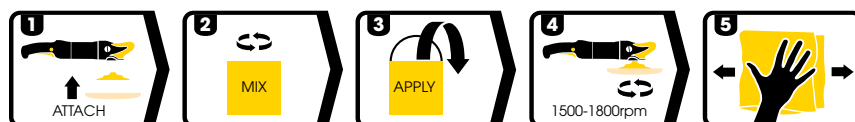
Our "liquid sand paper", Profile Extra is a coarse, water-based cutting compound designed for aggressive compounding on tough resins and gel coats. Removes up to P600 sanding marks leaving a low level shine in comparison to other compounds making it suitable for stone and granite and other surfaces.

PART #	FARECLA PART #	SIZE	CASE QTY
780727 63866	PRE306	3 kg pail	4

TECHNICAL INFORMATION

APPEARANCE	VISCOSITY	VOC CONTENT	RELATIVE DENSITY	PH	PAINT TYPE COMPLIANCE
White-colored paste	High	0 g/L (non-volatile)	1.57	9.6	Hard tooling, production gel coats and solid surfaces

HOW TO USE



Profile 300 Rapid Cut Compound

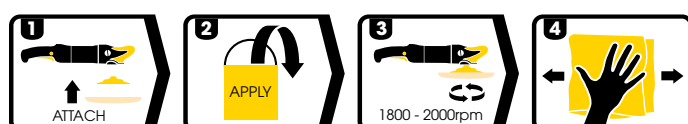
Profile 300 is a versatile, mid-range, high gloss compound capable of removing dry abrasive marks from P1000-P1200. It restores gloss and color to virtually any gel coated or painted surface. This traditional compound can be used by itself or with other compounds either as a first stage before Profile Finish, or as a finishing compound after Profile Extra Coarse Cut.

PART #	FARECLA PART #	SIZE	CASE QTY
780727 64012	PRO300-3000	3 kg pail	4

TECHNICAL INFORMATION

APPEARANCE	VISCOSITY	VOC CONTENT	RELATIVE DENSITY	PH	PAINT TYPE COMPLIANCE
White-colored paste	35,000 cS	119 g/l	1.45	9.8	Polyester, acrylic, epoxy resins, gel coats, industrial paint finishes, wood and solid surfaces

HOW TO USE



REPEAT IF NECESSARY



STEP ONE+TWO

COMPOUNDING



Painted Surfaces

Profile Advanced Plus 400 Liquid Compound

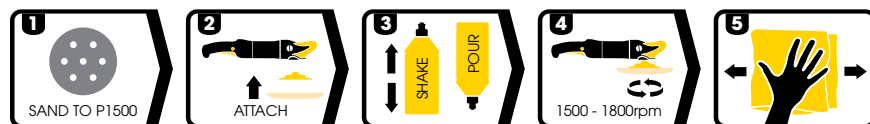
Offering the highest level of cut and gloss on painted surfaces and wood lacquers, the Profile Advanced Plus is an excellent choice. A unique abrasive technology that contains no fillers or silicones, allows operators to see sanding marks removed up to P1500 permanently. Gives a high shine finish with good depth and clarity.

PART #	FARECLA PART #	SIZE	CASE QTY
780727 15147	PRA101	1 Liter	6
780727 15148	PRA118	1 Gallon	2
780727 29474	PRA518	5 Gallon	1

TECHNICAL INFORMATION

APPEARANCE	VISCOSITY	VOC CONTENT	RELATIVE DENSITY	PH	PAINT TYPE COMPLIANCE
White-colored liquid	Medium	152 g/L	0.95	8 - 9	All wood lacquers, clear coats and paints

HOW TO USE



STEP TWO

FINISHING



Painted and Gel Coat Surfaces

Profile 700 Finish Light Cut Polish and Swirl Remover

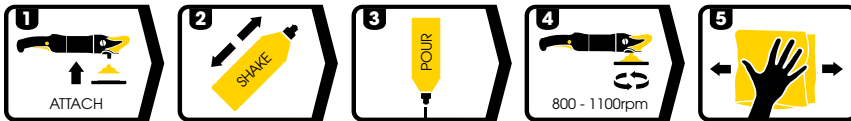
Profile 700 Finish Light Cut Polish & Swirl Remover is a very fine finishing compound designed to remove any light swirl marks and holograms from painted, lacquered, or gel coat surfaces leaving a high gloss finish.

PART #	FARECLA PART #	SIZE	CASE QTY
780727 63898	PRF112	1 Liter	6

TECHNICAL INFORMATION

APPEARANCE	VISCOSITY	VOC CONTENT	RELATIVE DENSITY	PH	PAINT TYPE COMPLIANCE
White-colored liquid	Medium	0 g/L	0.99	8.5-9.5	All paint types

HOW TO USE



STEP THREE

PROTECTING



Gel Coat Surfaces

Profile UV Wax Liquid Protection Compound

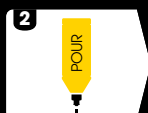
Profile UV Wax Liquid Protection is a Carnauba based wax incorporating special UV absorbers providing up to three months of protection on gel coats and painted surfaces. The high Carnauba content resists rain and salt water while the UV absorbers protect against damaging sunlight. Profile UV Wax will give a high gloss, long-lasting finish and is particularly suitable for use on boats, buses, planes, lacquered wood and UPVC surfaces.

PART #	FARECLA PART #	SIZE	CASE QTY
78072700170	PRU101	1 Liter	6

TECHNICAL INFORMATION

APPEARANCE	VISCOSITY	VOC CONTENT	RELATIVE DENSITY	PH	PAINT TYPE COMPLIANCE
Pale purple - colored liquid	Medium	167 g/L	0.97	7	All paint and surface types

HOW TO USE



CUT
GLOSS

STEP THREE

PROTECTING



Painted Surfaces

Profile Polymer UV Wax

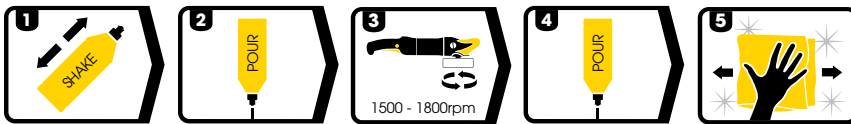
Quick and easy to use making short work of large surfaces, Profile Polymer Wax is perfect on boats, vans, trucks and planes. It delivers a high-gloss finish of excellent evenness with real transparency on dark colors. The durability of the protective coating it creates repels many common contaminants and is highly water-resistant. This sprayable formulation is perfect for ultra-fast applications due to its low viscosity and drying resistance.

PART #	FARECLA PART #	SIZE	CASE QTY
780727 00171	PRW101	1 Liter	6

TECHNICAL INFORMATION

APPEARANCE	VISCOSITY	VOC CONTENT	RELATIVE DENSITY	PH	PAINT TYPE COMPLIANCE
Pink-colored liquid	Low / Medium	131 g/L	0.960	7	Any painted or industrial surface

HOW TO USE



Painted and Gel Coat Surfaces

Clean and Protect

Is a silicone and VOC free product that offers immense cleaning power and leaves a long-lasting protective layer on the surface. Rapidly removes compound, residue, dust, fingerprints, and other contaminants from paint, gelcoats, glass, and plastics.

PART #	FARECLA PART #	SIZE	CASE QTY
780727 66935	CAP101	1 Liter	6

TECHNICAL INFORMATION

APPEARANCE	VISCOSITY	VOC CONTENT	RELATIVE DENSITY	PH	PAINT TYPE COMPLIANCE
Opaque white	Low / Medium	0 g/L	0.1	8.7	All paint and surface types

HOW TO USE



ACCESSORIES

APPLICATORS AND PADS

Having the right pad, whether it's a wool, foam, or waffle configuration, will help others see the perfection in your work. The Farécla system includes multiple choices in size and face to evenly distribute compound and create a reflection others will envy.



PART #	DESCRIPTION	QTY
FARÉCLA 8" CCS WAFFLE FOAM PADS – SINGLE-SIDED		
666233 91306	Cutting - White	6
666233 91307	Polishing - Black	6
666233 91308	Finishing - Blue	6
FARÉCLA 8" CCS WAFFLE FOAM PADS – DOUBLE-SIDED		
666233 91310	Cutting - White	6
666233 91311	Polishing - Black	6
666233 91312	Finishing - Blue	6
662544 35696	Cut-Polish Foam Pad - Black/White	6
FARÉCLA 3.25" CCS DIMPLE FOAM PAD – SINGLE-SIDED		
662610 85302	Cutting and Polishing - Orange	5
FARÉCLA 3.5" CCS WAFFLE FOAM PADS – SINGLE-SIDED		
666233 91319	Cutting - Orange	6
666233 91320	Polishing - Black	6
666233 91321	Finishing - Blue	6
FARÉCLA CUTTING WOOL PAD		
666233 91315	8" Single-Sided Wool Pad	6
FARÉCLA FINISHING WOOL PADS		
780727 59561 NEW	8" Single-Sided Blended Yellow Wool Pad	6
780727 59563 NEW	8" Double-Sided Blended Yellow Wool Pad	6
FARÉCLA SPOT REPAIR PADS FOR BUFFING/POLISHING		
636425 43832	3" Super Cut Wool Pad	40
636425 05459	3" Blue Cutting Foam Pad	40
636425 05460	3" White Finishing Foam Pad	40
636425 06128	3" Back-Up Pad	40

PART #	DESCRIPTION	QTY
FARÉCLA G-MOP SERIES BUFFING PADS		
780727 45650	8" G-Mop Single-Sided Lambswool Pad	6
780727 45643	8" G-Mop Double-Sided Wool Pad	6
780727 45649	8" G-Mop Wool Compounding Pad	6
780727 44634	8" G-Mop Red Waffle Pad	6
ACCESSORIES		
666233 91313	8" Double-Sided Pad Adapter*	6
666233 91330	8" Double-Sided Quick-Change Pad Adapter	6
666233 91314	8" Single-Sided Back-Up Pad	6
666233 91316	3.5" Back-up Pad	6
666233 91317	3" and 6" Rotary Extension	6
666233 91489	Pad Conditioning Brush	6
NORTON MICRO-FIBER PERFORMANCE CLOTH		
636425 04402	16" x 16" Blue - Thick	20
076607 05300	16" x 16" Blue - Bulk	20
076607 04025	16" x 16" Red - Bulk	20
076607 05301	16" x 16" Yellow - Bulk	20

* For use with G-Mop series double sided pads

www.nortonabrasives.com/en-us/farecla

USA CUSTOMER SERVICE:

Toll Free Phone: 1 (800) 551-4413
Toll Free Fax: 1 (800) 551-4416

CANADA CUSTOMER SERVICE:

Toll Free Phone: 1 (800) 263-6565
Toll Free Fax: 1 (800) 561-9490

FORM #8878 REV. 11/23

© Saint-Gobain November 2023.

Farécla is a brand of Saint-Gobain and Norton is a trademark of Saint-Gobain Abrasives. All other trademarks are the property of their respective owners.

