

NEXT GENERATION  
TECHNOLOGY



## Advanced Creepfeed Grinding

**NORTON**

SAINT-GOBAIN

**VORTEX2**  
TECHNOLOGY



INNOVATION TECHNOLOGY





**NORTON**

SAINT-GOBAIN

**VORTEX<sup>2</sup>**  
TECHNOLOGY

**The advanced high performance  
bond in Vortex<sup>TM</sup> 2 Technology,**  
developed by Saint-Gobain Abrasives,  
maximises profile holding, significantly  
increasing metal removal rates and wheel  
life, raising productivity to a new level.



**NORTON**  
SAINT-GOBAIN  
**VORTEX<sup>2</sup>**  
TECHNOLOGY

**Innovative bond  
technology for  
improved productivity**



## High Metal Removal

Vortex 2 Technology combines specially engineered abrasive grain and a new bond formula. This brings all the advantages of significantly higher metal removal rates, further improved form holding and longer wheel life with reduced risk of metallurgical damage.

## Reduced Cycle Times

**Vortex 2** Technology reduces cycle time by up to 60% thanks to the increased depth of cut and reduced number of passes.

## Exceptional Profile Holding

Vortex 2 maintains a tight edge radius at high MRR', for excellent profile holding and increased productivity.

## Long Wheel Life

The optimised abrasive and porosity distribution combined with new bond system provides a 40% increase in wheel life. The need for frequent wheel dressing is reduced due to improved form holding of the wheel profile

## Ultimate Burn Reduction

A complete revolution from classical porous wheel technologies as optimum 3D grain spacing is achieved without artificial pore inducers. The totally open porosity is a key advantage, providing excellent coolant access on difficult to grind and heat sensitive nickel based alloys

## Large Areas of Contact

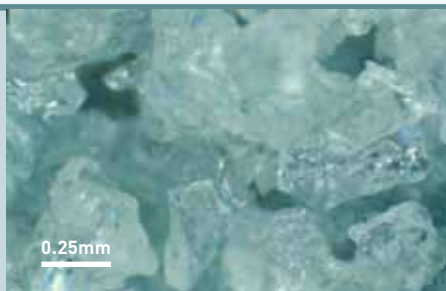
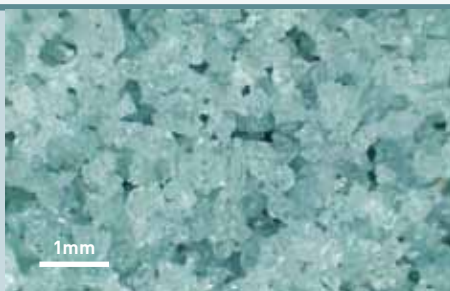
Excels in grinding applications with large areas of contact such as Creepfeed Grinding, Gear and Surface Grinding.

## Markets

- Aerospace
- Automotive
- Tools
- Gears

## Features

- New bond formula
- High performance engineered fused alumina grain
- Highly porous & permeable for maximising coolant diffusion in the grinding zone
- Optimum grain spacing for improved chip clearance and reduced friction from 'spot contact'



Highly porous and permeable grain structure for maximum coolant access to the grinding zone.

Fir tree before and after grinding



## Benefits

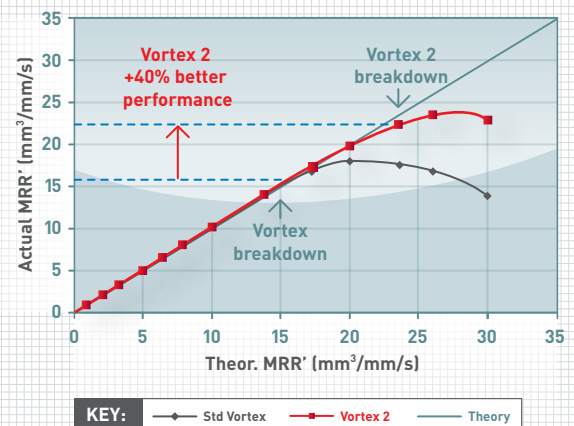
- High profile holding for extended wheel life and improved productivity
- Improved total cost versus performance ratio
- Maintains cool cutting
- Very high metal removal rates for significant cycle time reduction
- Very long wheel life though dramatically reduced wheel dressing
- Gentle on the dressing tool, very easy to profile
- Ultimate degree of burn reduction through extreme permeability
- Reduced residual stress after grinding
- Easy conversion from Vortex to Vortex2 specification

## Internal testing

### Test 1: Wheel Life Analysis

#### Vortex 2 works up to 40% faster

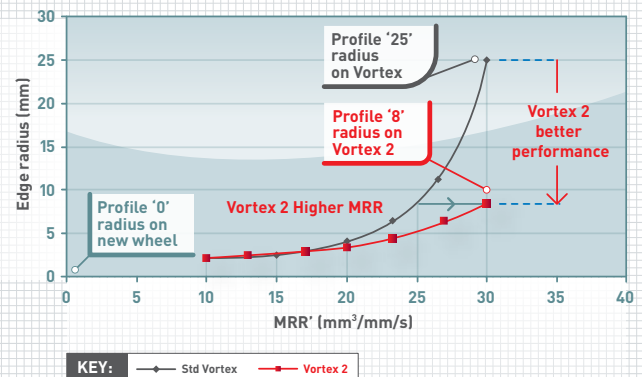
By grinding under extreme MRR', an indication of wheel durability is given when actual MRR' no longer follows the theoretical MRR' line. At 16mm<sup>3</sup>/mm/s, standard Vortex begins to break down. Vortex 2 matches theoretical MRR' until 22mm<sup>3</sup>/mm/s. Vortex 2 provides a huge improvement in productivity.



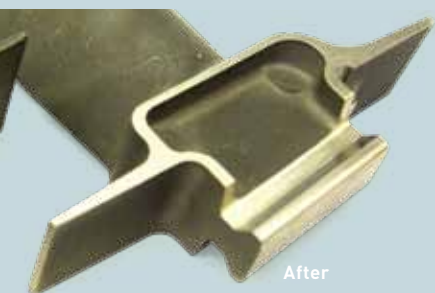
### Test 2: Profile Holding

#### Vortex 2 has improved profile holding

For a given MRR', a lower edge radius indicates better profile holding. At similar profile radius, Vortex 2 guarantees a higher MRR'.



## Innovation



**Vortex2** is the combination of engineered 3D grain spacing and a new technology bond created by Saint-Gobain Abrasives' Research & Development Department. The result is a cool cutting abrasive which provides a 40% increase in wheel life and profile holding. An excellent tool with superb performance benefits.



# Case studies

## Case Study 1

**Application:** Creepfeed Grinding  
**Part:** Nozzle guide vane  
**Material:** Inconel  
**Machine:** Makino  
**Coolant:** Emulsion 5%  
**Wheel dimension:** 220x20x32mm  
**Wheel specification:** IPA100EH17VTX2

### Results vs. competitor:

Wheel life: **+30% MORE**  
Cycle time: **-11% SHORTER**  
Total cost per part: **-18% LOWER**

## Case Study 2

**Application:** Gear profile grinding  
**Part:** Large windmill gear axis, module 12  
**Material:** M6 steel 62 HRc  
**Machine:** Gleason-Pfauter P1200G  
**Coolant:** Neat oil  
**Wheel dimension:** 400x50x127mm  
**Wheel specification:** IPA100XH26VTX2

### Results vs. competitor:

Wheel life: **+25% MORE**  
Cycle time: **-50% SHORTER**  
Total cost per part: **-30% LOWER**

## Case Study 3

**Application:** Creepfeed Grinding  
**Part:** Gas turbine blade, fir tree  
**Material:** Inconel  
**Machine:** Blohm Profimat  
**Coolant:** Emulsion 6%  
**Wheel dimension:** 550x160x203.2mm  
**Wheel specification:** IPA60ME26VTX2

### Results vs. competitor:

Wheel life: **+50% MORE**  
Cycle time: **-16% SHORTER**  
Total cost per part: **-20% LOWER**

## Case Study 4

**Application:** Creepfeed Grinding  
**Part:** Turbine blade, fir tree  
**Material:** Inconel  
**Machine:** Makino  
**Coolant:** Emulsion 5%  
**Wheel dimension:** 220x35x32mm  
**Wheel specification:** IPA60EH20VTX2

### Results vs. competitor:

Wheel life: **+35% MORE**  
Cycle time: **-24% SHORTER**  
Total cost per part: **-20% LOWER**

## This image shows a single sheet of white paper with horizontal ruling lines. The lines are evenly spaced and run across the width of the page. There are no margins, text, or other markings on the paper.

## This image shows a single sheet of white paper with horizontal ruling lines. The lines are evenly spaced and run across the width of the page. There are no margins, text, or other markings on the paper.

## Vortex 2 availability

	DESIGNATION	DESCRIPTION
Abrasive type	IPA	Engineered 3D alumina grain
Grain size FEPA F	46, 60, 80, 100, 120	
Grade	ME HA EH XH	Medium Hard Extra hard Extra, extra hard
Structure	17 20 26 29	Less open structure for improved form holding and wheel wear  More open structure for higher MRR and heat sensitive parts
Bond type	VTX2	New bond for improved form holding and wheel life
Colour	Blue-green	

Form holding

MRR increases

## Environmental benefits

The patented Vortex grain technology does not require the use of chemical pore inducers, unlike other porous vitrified wheel technologies. By choosing **Vortex 2** Technology for your grinding operation, you help to preserve the environment.



  
SAINT-GOBAIN  
ABRASIVES

Saint-Gobain Abrasives  
European Headquarters  
Rue de l'Ambassadeur - B.P.8  
F78702 Conflans-Saint-Honorine  
France  
Tel: +33 (0) 134 90 40 00  
Fax: +33 (0) 139 19 89 56  
www.saint-gobain.com  
Form # 1974