



DEFECT REMOVAL AND BUFFING - MARINE & COMPOSITES

BEST PRACTICE

Defect Removal

Sand with the appropriate Norton product depending on what type of gel coat being used and what sand scratch is needed to achieve the desired results before buffing.

Objective: Remove defects.

Tip: Start DA sander after it is in contact with the surface. Use light pressure; keep DA sander flat. Work in small sections with a slow, steady movement. Sand in an up and down motion then a side to side motion with slight overlap. Once the desired finish is achieved, wipe the area with a microfiber cloth or blow with clean air.



Scratch Refinement

Each Farecla compound has a unique abrasive technology removing sanding marks permanently avoiding costly reworks.

DESCRIPTION	PRODUCT #	PART #	SIZE	SCRATCH PATTERN
Profile Premium Liquid Compound	PRL101	78072700165	1 Liter	P1200 < FINER
Profile Premium Liquid Compound	PRL106	78072700166	1 US Gallon	P1200 < FINER
Profile Premium Coarse Cut Paste	PRP301	78072717217	3.5 kg Pail	P800 < FINER
Profile Extra Coarse Cut Paste	PRE301	78072700163	3.2 kg Pail	P600 < FINER
Profile 300 Rapid Cut Paste	81007	78072718073	3.2 kg Pail	P1000 - P1200

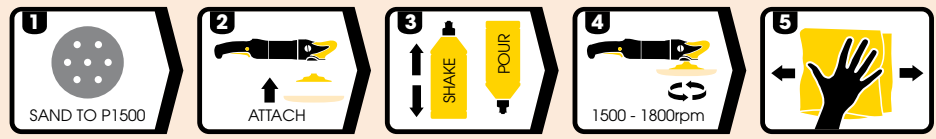


Buffing

Follow each step sequence for achieving best results pending the compound used and scratch grit to be removed.

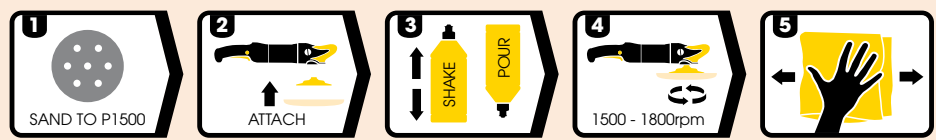
Profile Advanced Plus Liquid Compound

Offering the highest level of cut and gloss on painted surfaces and wood lacquers, the Profile Advanced Plus is an excellent choice. A unique abrasive technology that contains no fillers or silicones, allows operators to see sanding marks removed up to P1500 permanently. Gives a high shine finish with good depth and clarity.



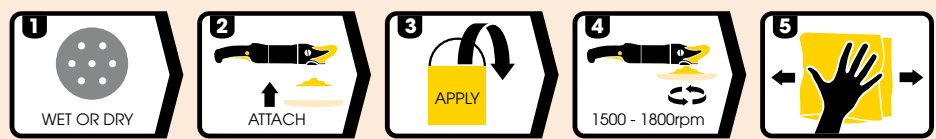
Profile Advanced Liquid Compound

Profile Advanced is an exceptional liquid compound for use on clearcoats, PU lacquers and painted surfaces, giving a permanent scratch-free finish. Sanding marks of P1500 and finer are effortlessly removed with a twisted wool compounding pad or white waffle pad. Provides a long lasting, powerful cut, with no dusting and minimal splatter.



Profile Premium Coarse Cut Paste

This compound takes things a step further with removing sanding marks up to P800 while leaving you with a high gloss finish. Easy to apply and with added lubrication, it resists drying out in hot conditions or on large working surfaces. It is often used as the sole compound on white gel coats. Use with wool G-Mop buffing pads.



Profile Extra Coarse Cut Paste

Our "liquid sand paper", Profile Extra is a coarse, water-based cutting compound designed for aggressive compounding on tough resins and gel coats. Removes up to P600 sanding marks leaving a low level shine in comparison to other compounds making it suitable for stone and granite and other surfaces. Use with wool G-Mop buffing pads.



Profile 300 Rapid Cut Compound

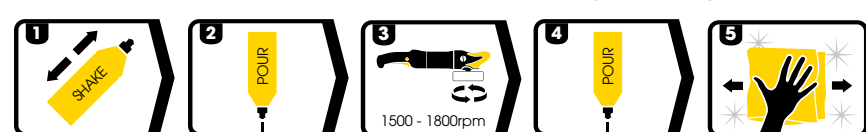
A versatile, mid-range, high gloss compound capable of removing dry abrasive marks from P1000-P1200. It restores gloss and color to virtually any gel coated or painted surface. It can be used by itself or with other compounds either as a first stage before Profile Finish, or as a finishing compound after Profile Extra Coarse Cut. Use with wool G-Mop buffing pads.



Added Protection

Profile Polymer UV Wax

Quick and easy to use making short work of large surfaces, Profile Polymer Wax is perfect on boats, vans, trucks and planes. It delivers a high-gloss finish of excellent evenness with real transparency on dark colors.



Profile Rapid Detailer Cleaner & Wax

Profile Rapid Detailer is a fast liquid spray wax for that "just waxed" look or simply a quick clean leaving a high gloss finish. Simply spray or wipe on and buff-off. It's perfect for paintwork, rubber, vinyl, plastic, glass and chrome. And, it will not remove previously applied polishes or waxes aiding continuous protection.



RECOMMENDED PRODUCTS

	5" x 11/16"	6" x 11/16"	5"	5"	6"
	BEST	BETTER	GOOD		
	DRY ICE A975 DISCS	DURITE A475 DISCS	Q275 DISCS		
600	77696007791	77696007786	66254421217	66261101604	
800	77696007793	77696007787		66261101618	
1000	77696007795	77696007788		66261101617	
1200				66261101601	66261101616
1500				66261101615	
PKG:	50/200	50/200	100	50/200	50/200

NORTON ICE Q255 H&L DISCS	PART #
3" P1500 - Blue	63642506022
6" P1500 - Blue	63642506015
3" P3000 - Green	63642506020
6" P3000 - Green	63642506013

8" CCS WAFFLE FOAM PADS	PART #	CASE QTY
Cutting - White	66623391306	6
Polishing - Black	66623391307	6
Finishing - Blue	66623391308	6

8" DOUBLE SIDED CSS WAFFLE FOAM PADS	PART #	CASE QTY
Waffle Cutting - White	66623391310	6
Waffle Cutting - Black	66623391311	6
Waffle Cutting - Blue	66623391312	6

3.25" CCS DIMPLE FOAM PADS	PART #	CASE QTY
Cutting and Polishing - Orange	66261085302	5

3.5" CCS WAFFLE FOAM PADS	PART #	CASE QTY
Cutting - Orange	66623391319	6
Polishing - Black	66623391320	6
Finishing - Blue	66623391321	6

CUTTING WOOL PADS	PART #	CASE QTY
8" Double Sided Wool	66623391309	6
8" Single Sided Wool	66623391315	6
3.5" Single Sided Wool	66623391318	6

COMPOUNDING WOOL PAD	PART #	CASE QTY
8" US Advanced Wool	78072745649	6

G-MOP BUFFING PADS	PART #	CASE QTY
8" G-Mop Single Sided Lambswool	78072700176	12
8" G-Mop Lambswool	78072745650	6
8" G-Mop Single Sided Wool	78072700175	12
8" G-Mop Double Sided Wool	78072700174	12
8" G-Mop Double Sided Wool	78072745643	6
8" G-Mop Single Sided Red Waffle	78072744634	6

ACCESSORIES FOR G-MOP SERIES BUFFING PADS	PART #	CASE QTY
8" Black-Up Pad 5/8" Thread x 6	78072708721	6
8" Double Sided Pad Adapter	66623391313	6
8" Back-Up Pad	66623391314	6
3.5" Back-Up Pad	66623391316	6
3" and 6" Rotary Extension	66623391317	6

SPOT REPAIR PADS FOR BUFFING/POLISHING	PART #	CASE QTY
3" Super Cut Wool	63642543832	40
3" Cutting Foam - Blue	63642505459	40
3" Finishing Foam - White	63642505460	40
3" Back-Up Pad	63642506128	40

PROFILE POLYMER UV WAX	PART #	CASE QTY
Profile UV Wax PRU101	78072700170	1 Liter

PROFILE RAPID DETAILER CLEANER & WAX	PART #	CASE QTY
1 Gallon - PRD106	78072717216	6

MICRO FIBER PERFORMANCE CLOTH	PART #
16" X 16" Blue - Thick	63642504402
16" X 16" Blue	07660705300
16" X 16" Red	07660704025
16" X 16" Yellow	07660705301

