

**NORTON**

SAINT-GOBAIN

Transforming  
surfaces  
...and beyond

REFINISHING PRODUCTS  
WIRE BRUSH  
AND WHEEL



  
SAINT-GOBAIN



Industrial Quality

Aggressive  
Material Removal



### FEATURES & BENEFITS

- For use on angle grinders
- For heavy duty brushing on large surfaces
- Brushing, deburring, cleaning and removal of rust, paint etc.

### PREMIUM WIRE BRUSH

Most brushes have M14 x 2 thread compatible with most common grinders in Australia and New Zealand.

Therefore these brushes are very aggressive and also cover a larger surface area at a time.

The blue ring around the mounting thread, indicates stainless steel wire.



### THREADED CUP BRUSHES

Twistknot Wire

PART NUMBER	BRUSH Ø	ROW	SKIRT	THREAD	WIRE Ø	MATERIAL	MAX RPM	CTN	BARCODE
66254406095	65mm	1	N	M14 x 2	0.5mm	Steel	15000	1	87114794 <b>49147</b>
63642598835	75mm	1	N	M14 x 2	0.5mm	Steel	13000	12	93103572 <b>91831</b>
66254406088	100mm	1	N	M14 x 2	0.5mm	Steel	8500	1	87114794 <b>49109</b>
66254406068	65mm	1	N	M14 x 2	0.5mm	S/Steel	15000	1	87114794 <b>49031</b>



### THREADED BEVEL BRUSHES

Twistknot Wire

PART NUMBER	BRUSH Ø	ROW	SKIRT	THREAD	WIRE Ø	MATERIAL	MAX RPM	CTN	BARCODE
66254406149	100mm	1	N	M14 x 2	0.5mm	Steel	15000	1	87114794 <b>49253</b>
66254406147	115mm	1	N	M14 x 2	0.5mm	Steel	13000	1	87114794 <b>49246</b>
66254406144	115mm	1	N	M14 x 2	0.5mm	S/Steel	13000	1	87114794 <b>49222</b>

Cleaning and removal of welding scale, metallic structures, ship building, etc. Access to angle profiles.





Industrial Quality

Light-Medium  
Material Removal



FEATURES & BENEFITS

- For use on angle grinders
- For light to medium-duty brushing on large surfaces
- Brushing, deburring, cleaning and removal of rust, paint etc.

PREMIUM WIRE BRUSH

Most brushes have M14 x 2 thread compatible with most common grinders in Australia and New Zealand.



THREADED CUP BRUSHES

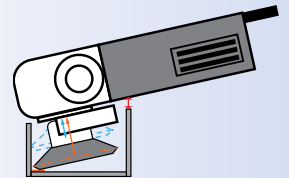
Crimped wire

PART NUMBER	BRUSH Ø	ROW	SKIRT	THREAD	WIRE Ø	MATERIAL	MAX RPM	CTN	BARCODE
66254406055	75mm	1	N	M14 x 2	0.3mm	Steel	13000	1	87114794 <b>48959</b>
66254406050	125mm	1	N	M14 x 2	0.3mm	Steel	8500	1	87114794 <b>48911</b>

TIP

WORKING WITH ANGLE GRINDERS IN RESTRICTED AREAS

Cup brushes have larger distance between the brush face and the grinder body than the equivalent bevel brushes. In certain applications this may need to be taken into consideration during the brush selection.



THREAD ADAPTOR

PART NUMBER	EXTERNAL THREAD	INTERNAL THREAD	MAX RPM	CTN	BARCODE
78072775120	M14 x 2	M10 x 1.5	15000	1	93103572 <b>91855</b>

Converts the wire brush thread from M14 x 2 to M10 x 1.5. This allows the same wire brush to be used on a 100mm (4") angle grinder. One (1) adaptor per pack. Hexagonal head for easy attachment & removal.





Multibore

Medium Duty  
Material Removal



### FEATURES & BENEFITS

- For use on bench grinders
- Flash removal (plastic, rubber or steel parts)
- Edge blending
- Deburring
- Surface preparation prior to plating or painting, cleaning of paint, rust, dirt or scale
- Roughening or surface finishing for appearance

### PREMIUM WIRE BRUSH

The Multi-bore versions come with sets of spindle adaptors to fit all standard shafts.

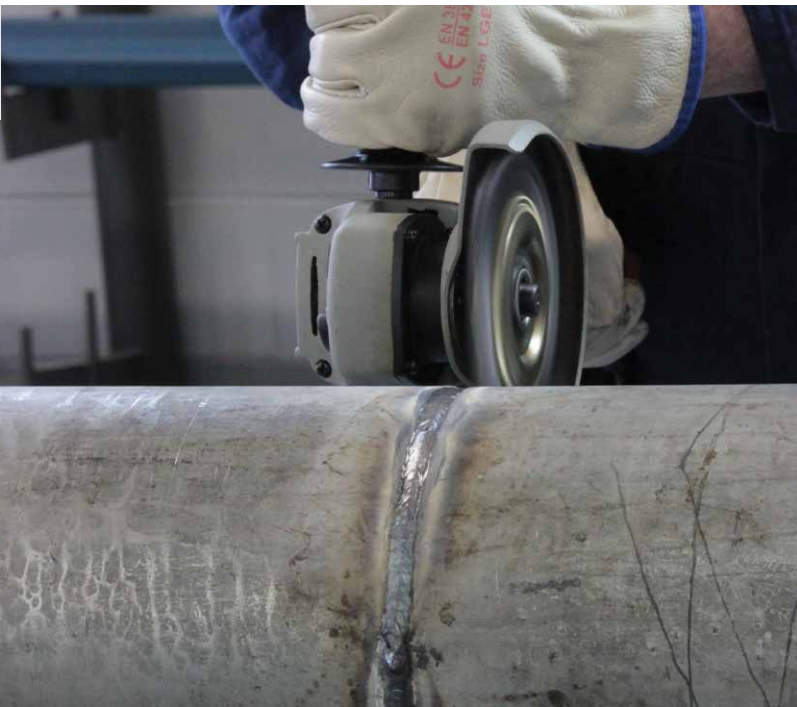
Use the correct size adaptor ring as a spacer between the inner flange and the grinder body.



### WIRE WHEELS Crimped Wire

PART NUMBER	BRUSH Ø	THICK	BORE	WIRE Ø	MATERIAL	MAX RPM	CTN	BARCODE
69936653306	150mm	18mm	Multi	0.3mm	Steel	6500	5	6993665 <b>33064</b>
69936653324	150mm	25mm	Multi	0.3mm	Steel	6500	5	6993665 <b>33248</b>
69957370117	200mm	20mm	Multi	0.3mm	Steel	4500	5	6995737 <b>01171</b>
69936653326	200mm	25mm	Multi	0.3mm	Steel	4500	5	6993665 <b>33262</b>
69957370134	250mm	37mm	Multi	0.3mm	Steel	4500	1	6995737 <b>01348</b>
69957370135	305mm	50mm	Multi	0.3mm	Steel	3600	1	6995737 <b>01355</b>





Industrial Quality

Heavy Duty  
Removal



### FEATURES & BENEFITS

- For use on angle grinders and straight grinders
- Heavy duty applications in pipeline or container construction

### PREMIUM WIRE BRUSH

Designed for high mechanical loads.

Special narrow wire twist knots for work in hard-to reach places e.g. root weld seams.

Brushes with a higher number of knots are more aggressive. Supplied individually packed in sturdy industrial cartons.



### PIPELINE BRUSHES

Twistknot

PART NUMBER	BRUSH Ø	THICK	KNOTS	BORE	WIRE Ø	MATERIAL	MAX RPM	CTN	BARCODE
63642581157	125mm	6mm	42	22.2	0.5mm	Steel	12500	15	87114796 <b>10172</b>
63642581640	125mm	6mm	42	22.2	0.5mm	S/Steel	12500	15	87114796 <b>10745</b>

### TIP

#### STAINLESS STEEL APPLICATIONS

All standard Norton stainless steel brushes are made with 308 stainless steel wire. In addition we recommend observing the following rules for achieving the best results and preventing corrosion.

- | DO   | DON'T  |
|--|--|
| <ul style="list-style-type: none"> <li>✓ Avoid contact between the workpiece and other brush parts.</li> <li>✓ Use lower rotational speed (than for steel applications).</li> <li>✓ Work with the minimum pressure possible.</li> <li>✓ Keep moving the brush over the whole target area.</li> <li>✓ Use the stainless steel brush only for stainless steel applications.</li> </ul> | <ul style="list-style-type: none"> <li>✗ Don't use brushes that have already been used on non-stainless steel applications.</li> <li>✗ Don't work on steel applications near stainless steel.</li> </ul> |

The blue ring on the face plate indicates stainless steel wire.



Industrial Quality

High Material  
Removal



**FEATURES & BENEFITS**

- For use on die grinders or drills
- Ideal for work on complex surfaces and in hard-to-reach areas such as dies, engines, car bodies etc.

**PREMIUM WIRE BRUSH**

Designed for high mechanical loads.

Special narrow wire twist knots for work in hard-to reach places e.g. root weld seams.

They are designed to operate on high speeds, which offers high material removal rates.



**SPINDLED BRUSHES**

Suits Drills

PART NUMBER	BRUSH Ø	WIRE	MOUNT	WIRE Ø	MATERIAL	MAX RPM	CTN	BARCODE
69957365167	50mm	Crimped	¼" Hex	0.3mm	Steel	4500	5	87193621 <b>88333</b>
69957365215	75mm	Crimped	¼" Hex	0.3mm	Steel	4500	5	87193621 <b>88364</b>



**ROTARY WHEELS & END BRUSHES**

Suits Die Grinders

PART NUMBER	BRUSH Ø	THICK	WIRE	MOUNT	WIRE Ø	MATERIAL	MAX RPM	CTN	BARCODE
69957370120	38mm	10mm	Crimped	¼"	0.3mm	Steel	25000	12	6995737 <b>01201</b>
69957370126	65mm	15mm	Crimped	¼"	0.3mm	Steel	25000	12	6995737 <b>01263</b>
69957370132	75mm	15mm	Crimped	¼"	0.3mm	Steel	25000	12	6995737 <b>01324</b>
69957370133	100mm	15mm	Crimped	¼"	0.3mm	Steel	25000	12	6995737 <b>01331</b>
69957370141	75mm	6mm	T/Knot	¼"	0.5mm	Steel	20000	6	6995737 <b>01416</b>
69936653316*	18mm	-	T/Knot	¼"	0.5mm	Steel	25000	10	6993665 <b>33163</b>
69936653310*	25mm	-	T/Knot	¼"	0.5mm	Steel	25000	10	6993665 <b>33101</b>

\*End Brushes





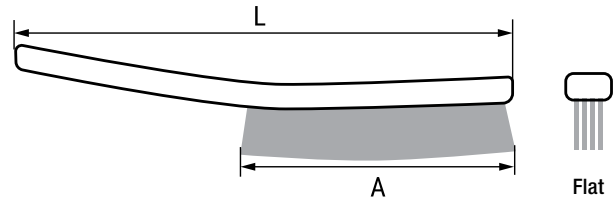
Wooden or Plastic  
Handle

Medium Material  
Removal



**PREMIUM HAND SCRATCH WIRE BRUSH**

Ideal for general purpose use in light deburring, cleaning and removal of rust, paint or other surface materials.



**SCRATCH BRUSHES**

Hand - Wooden Handle

PART NUMBER	L	ROW	A	MATERIAL	CTN	BARCODE
66254405434	290mm	3	140mm	Steel	30	87114794 <b>48027</b>
66254405435	290mm	4	140mm	Steel	24	87114794 <b>48034</b>



**SCRATCH BRUSHES**

Hand - Plastic Handle

PART NUMBER	COLOUR	L	ROW	A	MATERIAL	CTN	BARCODE
00210013481	Green	275mm	4	130mm	Steel	10	93103572 <b>86721</b>
00210013482	Red	275mm	4	130mm	S/Steel	10	93103572 <b>86714</b>
00210013502	Yellow	275mm	4	130mm	Brass	10	93103572 <b>87322</b>



**SCRATCH BRUSHES**

Hand - Spark Plug Brass

PART NUMBER	COLOUR	L	WIDTH	A	MATERIAL	CTN	BARCODE
66254405474	Red	135mm	15mm	15mm	Brass	12	87114794 <b>48232</b>





 NortonPacific

 NortonAbrasives

 NortonAbrasivesPacific

AUSTRALIA  
SAINT-GOBAIN ABRASIVES PTY. LTD.  
60 Hume Hwy, Somerton, VIC 3062,  
Toll Free: 1300 007 650  
sales.au@saint-gobain.com  
SAINT-GOBAIN.COM.AU

NEW ZEALAND  
SAINT-GOBAIN ABRASIVES LTD.  
70 Wharf Rd, Te Atatu Peninsula, AK 0610,  
Toll Free: 0800 74 24 24  
sales.nz@saint-gobain.com  
SAINT-GOBAIN.CO.NZ

© Saint-Gobain 2022

Norton and "Transforming surfaces...and beyond" are registered trademarks of Saint-Gobain Abrasives Pty. Ltd.