

TR 250 H DF

SPARE PART LIST



NORTON
SAINT-GOBAIN®

clipper®

1. SPARE PART LIST

| POS. | DÉSCRIPTION | N° ARTICLE | TYPE (*) | QTE |
|------|--|------------|----------|-----|
| 1 | Water tank | NA | S | 1 |
| | SCREW DIN 933 – M6X30 | NA | H | 2 |
| | NUT DIN 934 – M6 | NA | H | 2 |
| 2 | Water pump 230V | 310339881 | W | 1 |
| 3 | Table | NA | S | 1 |
| | SCREW DIN 933 – M6X25 | NA | H | 8 |
| | NUT DIN 934 – M6 | NA | H | 8 |
| 4 | Guiding wheels (set of 4) | 510100880 | W | 1 |
| 5 | Blade guard kit | 510100881 | S | 1 |
| | Splash guard | - | - | - |
| | SCREW DIN 933 – M5X16 | NA | H | 2 |
| | WASHER DIN 125 - Ø5,3 | NA | H | 4 |
| | NUT DIN 934 - M5 | NA | H | 2 |
| 6 | Flanges + Nut kit | 510100882 | S | 1 |
| 7 | Cutting head kit (incl. 4, 5, 6, 11, 16) | 510100928 | S | 1 |
| | Upper cutting head | - | - | - |
| | SCREW DIN 933 – M10X300 | NA | H | 1 |
| | SCREW DIN 603 – M10X300 | NA | H | 1 |
| | WASHER DIN 125 - Ø10,5 | NA | H | 3 |
| | WASHER DIN 9021 – Ø10.5 | NA | H | 2 |
| | NUT DIN 985 - M10 | NA | H | 1 |
| | NUT DIN 934 – M10 | NA | H | 1 |
| | SCREW DIN 933 – M8X16 | NA | H | 2 |
| | SCREW DIN 933 – M8X10 | NA | H | 2 |
| | WASHER DIN 125 – A8.4 | NA | H | 4 |
| | WASHER DIN 128 – Ø8.4 | NA | H | 4 |
| | SCREW DIN 933 – M4X10 | NA | H | 4 |
| | WASHER DIN 125 – A4 | NA | H | 4 |
| | Lower cutting head | - | - | - |
| | SCREW DIN 933 – M8X16 | NA | H | 4 |
| | SCREW DIN 7985H - M5X16 | NA | H | 1 |
| | WASHER DIN 125 - Ø5,3 | NA | H | 1 |
| | WASHER DIN 125 - Ø8,5 | NA | H | 2 |
| | WASHER DIN 127 - W8 | NA | H | 2 |
| | Locking head kit | - | - | - |
| | NUT DIN 934 – M6 | NA | H | 1 |
| 8 | Indexing handle + knobs kit | 510100929 | S | 1 |
| | SCREW DIN 316 - M5X12 | NA | H | 2 |
| | SCREW DIN 316 - M6X20 | NA | H | 2 |

| | | | | |
|----|-------------------------------------|-----------|---|---|
| 9 | Guiding rail kit | 510100930 | S | 1 |
| | SCREW DIN 933 – M5X20 | NA | H | 6 |
| | WASHER DIN 125 - Ø5,3 | NA | H | 6 |
| | WASHER DIN 127 - W5 | NA | H | 6 |
| | Guiding rail support kit (set of 2) | - | - | - |
| | SCREW DIN 933 – M6X20 | NA | H | 2 |
| | NUT DIN 934 – M6 | NA | H | 2 |
| | WASHER DIN 125 – A8 | NA | H | 4 |
| | NUT DIN 985 – M8 | NA | H | 2 |
| 10 | Cable and hose support kit | NA | S | 1 |
| | SCREW DIN 933 – M5X25 | NA | H | 1 |
| 11 | Motor 230V kit | 510111324 | S | 1 |
| | Connecting box kit | - | - | - |
| | SCREW DIN 933 – M8X15 | NA | H | 4 |
| | WASHER DIN 125 – A8 | NA | H | 4 |
| | WASHER DIN 128 – A8 | NA | H | 4 |
| | SCREW DIN 912 - M5X16 | NA | H | 4 |
| | WASHER DIN 128 – A5 | NA | H | 4 |
| 12 | 230V switch kit | 510100969 | S | 1 |
| | SCREW DIN 7985H – M4X12 | NA | H | 4 |
| | WASHER DIN 125 – A4 | NA | H | 4 |
| 13 | Lateral guide-a-cut kit | 510111334 | S | 1 |
| | SCREW DIN 965 – M6X20 | NA | H | 2 |
| | WASHER DIN 125 - Ø6,3 | NA | H | 2 |
| | NUT DIN 934 - M6 | NA | H | 2 |
| | Angular guide-a-cut | - | - | - |
| | SCREW DIN 316 – M6X20 | NA | H | 2 |
| | WASHER DIN 125 – A6 | NA | H | 1 |
| | Material stop kit | - | - | - |
| | SCREW DIN 933 – M6X15 | NA | H | 2 |
| | WASHER DIN 125 - Ø6,3 | NA | H | 2 |
| | WASHER DIN 6797J - Ø6,4 | NA | H | 2 |
| | Lateral splash guard | - | - | - |
| | Rear splash guard | - | - | - |
| | SCREW DIN 316 – M6X20 | NA | H | 2 |
| | WASHER DIN 125 – A6.4 | NA | H | 2 |
| 14 | Table extension | NA | S | 1 |
| | SCREW DIN 933 – M6X25 | NA | H | 2 |
| | NUT DIN 934 - M6 | NA | H | 2 |
| 15 | Set of 4 feet | 510100978 | S | 1 |
| | Rear feet (set of 2) | - | - | - |
| | NUT DIN 985 - M8 | NA | H | 2 |
| | WASHER DIN 128 - Ø8,5 | NA | H | 2 |
| | Front feet (set of 2) | - | - | - |
| | NUT DIN 985 - M8 | NA | H | 2 |
| | WASHER DIN 128 - Ø8,5 | NA | H | 2 |

| | | | | |
|----|-------------------------------|-----------|---|---|
| 16 | Spray system kit | 510100974 | S | 1 |
| 17 | Accessories | 510111335 | S | 1 |
| | Wrench | - | - | - |
| | Transport wheel (set of 2) | - | - | - |
| | SCREW DIN 601 – M8X85 | NA | H | 1 |
| | WASHER DIN 125 – A8 | NA | H | 3 |
| | WASHER DIN 128 – A8 | NA | H | 1 |
| | NUT DIN 1587 – M8 | NA | H | 1 |
| | SCREW DIN 316 – M8X16 | NA | H | 1 |
| | WASHER DIN 9021 – A8 | NA | H | 1 |
| | Water plug | - | - | - |
| | SCREW DIN 7985 – M5X10 | NA | H | 1 |
| | WASHER DIN 125 – A5 | NA | H | 1 |
| 20 | DF Frame airtightness kit | 510100970 | S | 1 |
| | 45° material stop | - | - | - |
| | 45° table support | - | - | - |
| | SCREW DIN 933 – M6X20 | NA | H | 2 |
| | WASHER DIN 125 – A6.4 | NA | H | 4 |
| | NUT DIN 934 – M6 | NA | H | 2 |
| | Vacuum rail | - | - | - |
| | SCREW DIN 933 – M8X45 | NA | H | 2 |
| 21 | Shucko socket outlet | 310376741 | S | 1 |
| 22 | DF Airtightness kit | 510112284 | S | 1 |
| | Vacuum hose Ø32 L2000mm | - | - | - |
| | Vacuum hose Ø32 L1000mm | - | - | - |
| | Dust guard | - | - | - |
| | Dust guard counter weight | - | - | - |
| | SCREW DIN 933 – M6X20 | NA | H | 2 |
| | WASHER DIN 125 – A6.4 | NA | H | 4 |
| | NUT DIN 985 – M6 | NA | H | 2 |
| | Reducing tee 45° Ø50-40 | - | - | - |
| | SCREW DIN 316 – M8X40 | NA | H | 2 |
| | WASHER DIN 125 – A8.4 | NA | H | 2 |
| | WASHER DIN 128 – A8 | NA | H | 2 |
| | Dust guard roller | - | - | - |
| | Dust guard roller support | - | - | - |
| | THREADED ROD DIN 916 – M8X190 | NA | H | 1 |
| | WASHER DIN 125 – A8.4 | NA | H | 6 |
| | NUT DIN 934 – M8 | NA | H | 2 |
| | NUT DIN 985 – M8 | NA | H | 2 |

| | | | | |
|----|---------------------------------|-----------|---|---|
| 23 | DF cutting head kit | 510100979 | S | 1 |
| | Blade guard | - | - | - |
| | Left side protection | - | - | - |
| | Plexiglas left side protection | - | - | - |
| | Plexiglas right side protection | - | - | - |
| | Right side protection | - | - | - |
| | Plexiglas spacer | - | - | - |
| | Fixing spacer | - | - | - |
| | WASHER DIN 125 – A6.4 | NA | H | 4 |
| | Lower vacuum head | - | - | - |
| | Vacuum head support | - | - | - |
| | Upper vacuum head | - | - | - |
| | WASHER DIN 9021 – A6.4 | NA | H | 2 |
| | NUT DIN 985 – M6 | NA | H | 2 |
| | Sound absorber foam (set of 2) | - | - | - |

(*): S = Spare part, W = Wear part, H = Hardware, NA = Not Available

NA = Not Available / this component is not available as wear part.

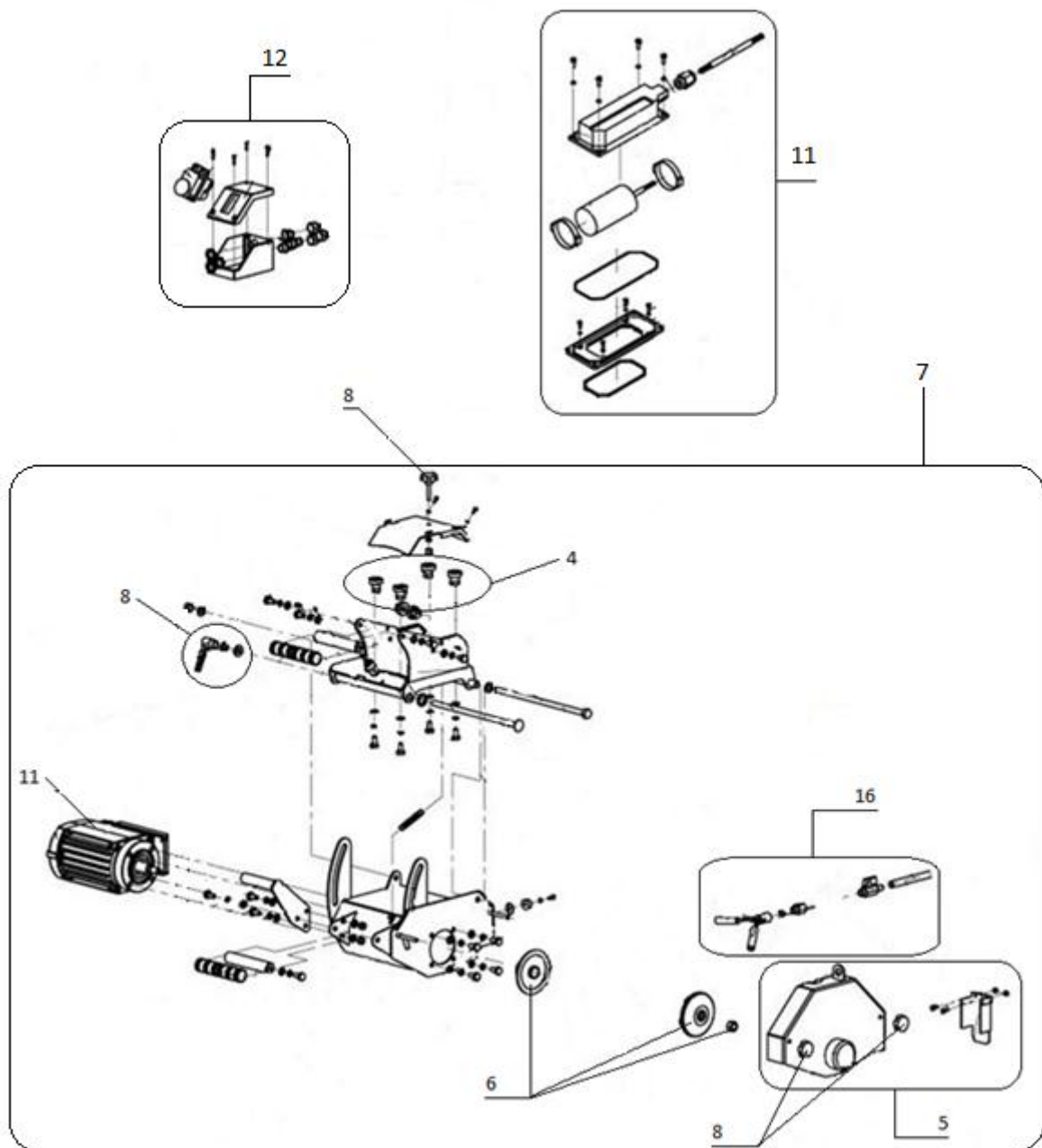
H : Not supplied alone / this component is a component standard which you can easily find at all the standard retailers of parts. All the standard components of assembly have a quality grade 8.8. We recommend to don't use a quality grade lower than 8.8.

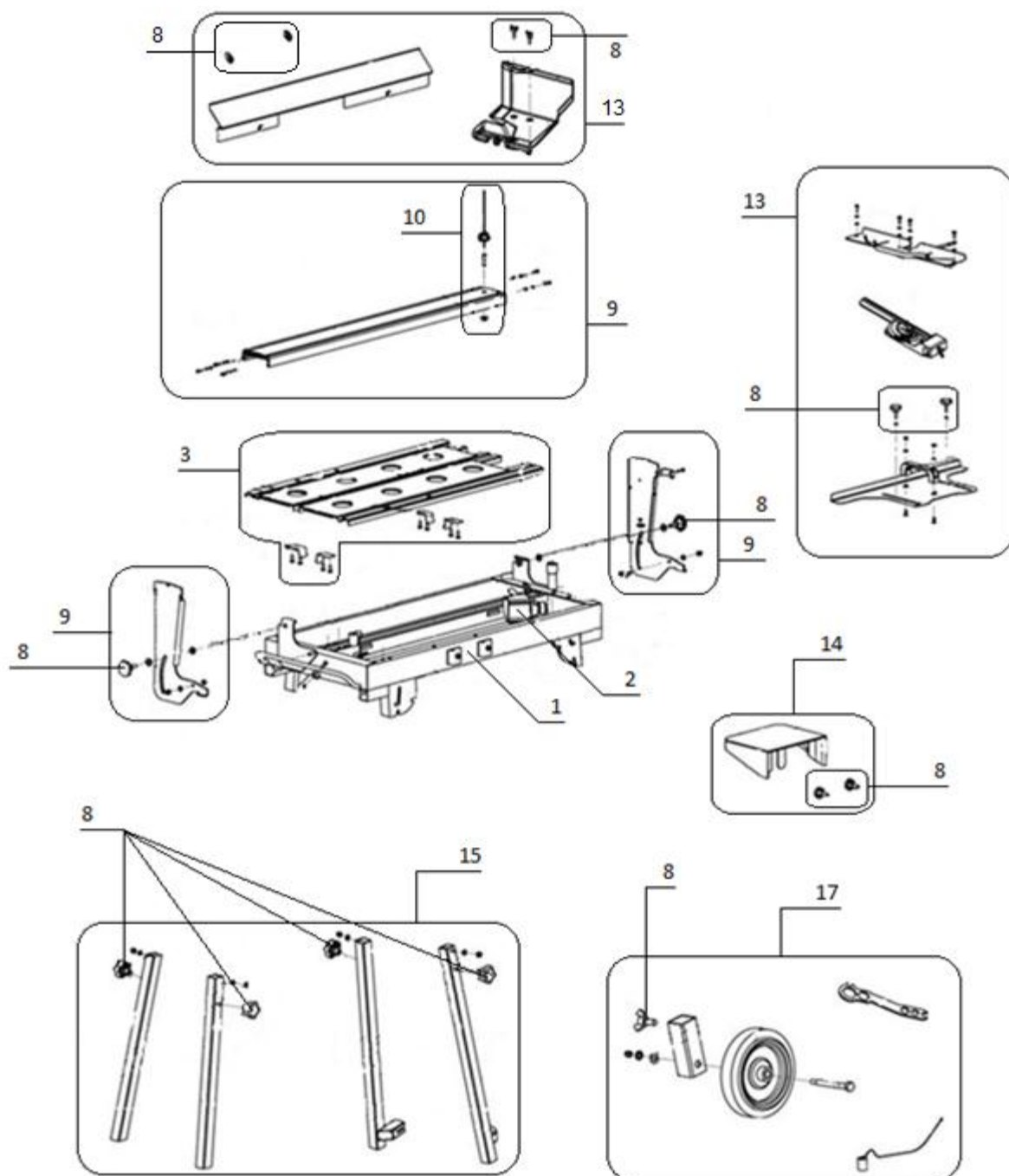
W : Wear parts are worn out through normal use of the machine. The use period depends a lot on the intensity of work of the machine.

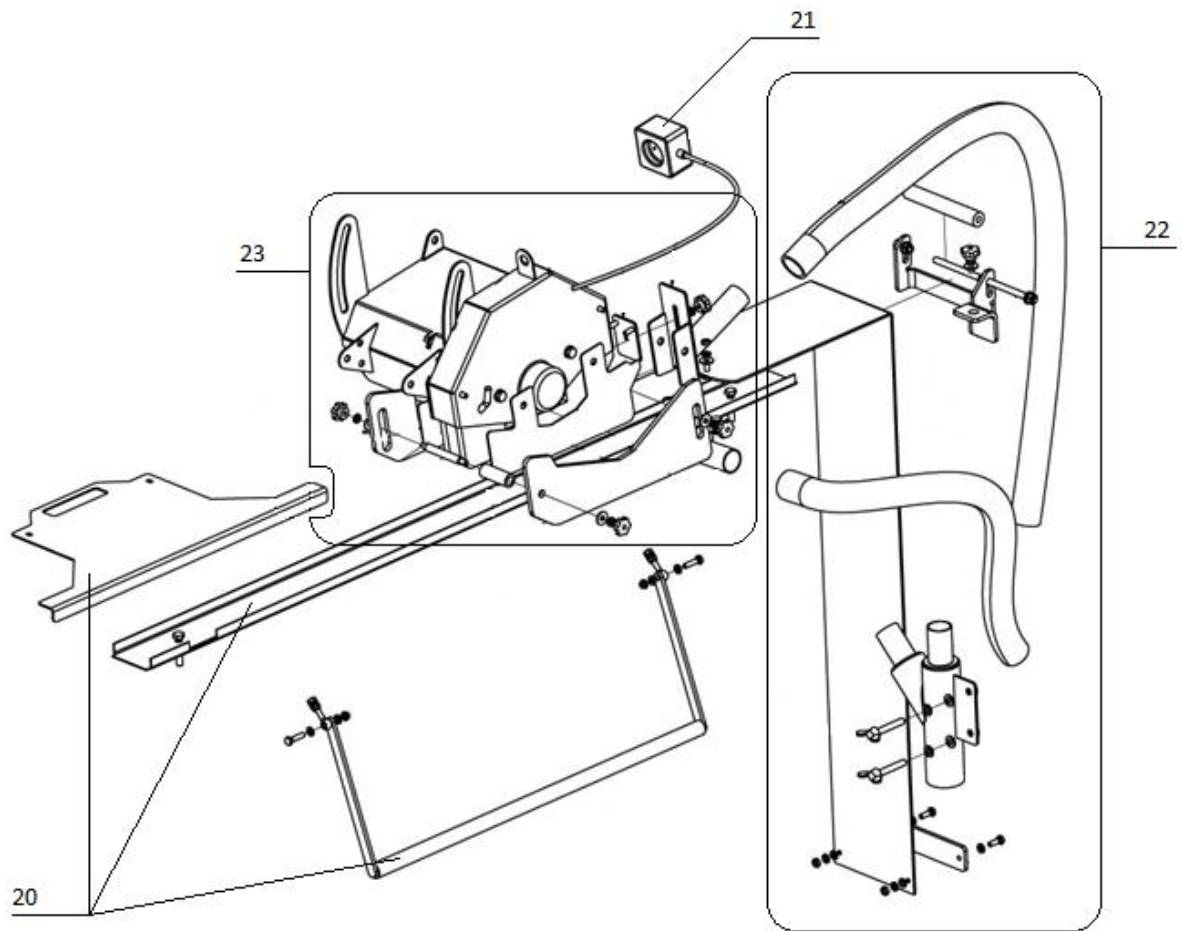
Wear parts must be serviced, used and eventually changed following the indications of the manufacturer. Any wear due to normal use of the machine will not be considered as a case of warranty.

S : Genuine CLIPPER replacement parts should always be used.

2. EXPLODED VIEW







www.construction.norton.eu

Saint-Gobain Abrasives

190, Bd. J. F. Kennedy
L-4930 BASCHARAGE
LUXEMBOURG

Tel: ++352 50401-1

Fax: ++352 501633

e-mail: sales.nlx@saint-gobain.com