

NORTON

SAINT-GOBAIN

clipper

Transforming
surfaces
...and beyond

CDR 254

OPERATING INSTRUCTIONS

Translation of the original instructions




SAINT-GOBAIN



CE Declaration of conformity

The undersigned manufacturer:

SAINT - GOBAIN ABRASIVES S.A.
190, BD. J. F. KENNEDY
L-4930 BASCHARAGE

Declares that this product:

Drill Rigs : **CDR 254**

Code : **310613821**

is in conformity with the following Directives :

- **"MACHINES" 2006/42/CE**

And the European standard:

- **EN 12348 – Core drilling machines on stand – Safety**

Valid for machines as of serial number:

4503705102001

Storage site for the technical documents :

Saint-Gobain Abrasives 190, Bd. J. F. Kennedy 4930 BASCHARAGE, LUXEMBOURG

This declaration of conformity loses its validity when the product is converted or modified without agreement.

Bascharage, Luxembourg, 26.05.2024

Fabrice Genuardi, executive officer and responsible for the technical file.
Bascharage, Luxembourg



Declaration of conformity

The undersigned manufacturer:

**SAINT - GOBAIN ABRASIVES S.A.
190, BD. J. F. KENNEDY
L-4930 BASCHARAGE**

Declares that this product:

Drill Rigs : **CDR 254**

Code : **310613821**

is in conformity with the following Directives :

- ***Supply of Machinery (Safety) Regulations 2008***

And the European standard:

- ***EN 12348 – Core drilling machines on stand – Safety***

Valid for machines as of serial number:

4503705102001

Authorised Representative:

SAINT-GOBAIN ABRASIVES

Unicorn House • Unit 1, Amison Close

Redhill Business Park • Stafford • England • ST16 1WB

This declaration of conformity loses its validity when the product is converted or modified without agreement.

Bascharage, Luxembourg, 26.05.2024

A handwritten signature in black ink, appearing to read 'Genuardi', is written over a light blue horizontal line.

Fabrice Genuardi, executive officer and responsible for the technical file.
Bascharage, Luxembourg

CDR 254

OPERATING INSTRUCTIONS

1	BASIC SAFETY INSTRUCTIONS	7
1.1	<i>Symbols</i>	7
1.2	<i>Machine plate</i>	8
1.3	<i>Safety instructions for particular operating phases</i>	8
2	MACHINE DESCRIPTION	9
2.1	<i>Short description</i>	9
2.2	<i>Purpose of use</i>	9
2.3	<i>Layout</i>	9
2.4	<i>Technical Data</i>	10
3	ASSEMBLY AND COMMISSIONING	11
3.1	<i>Assembling the motor on the rig</i>	11
3.2	<i>Tool assembly</i>	11
4	TRANSPORT AND STORING	11
4.1	<i>Securing for transport</i>	11
4.2	<i>Transport procedure</i>	11
4.3	<i>Long period of inactivity</i>	12
5	OPERATING THE MACHINE	13
5.1	<i>Site of work</i>	13
5.2	<i>Cutting method</i>	13
6	MAINTENANCE AND SERVICING	17
7	FAULTS: CAUSES AND CURES	18
7.1	<i>Fault-finding procedures</i>	18
7.2	<i>Trouble-shooting guide</i>	18
7.3	<i>Customer service</i>	19
7.4	<i>Spare parts</i>	20
8	APPENDIX	21
8.1	<i>Ideal rotation speed of the core bit in relation to the hole diameter</i>	21

1 BASIC SAFETY INSTRUCTIONS

The core drill rig CDR 254 is exclusively designed for the drilling of construction products mainly within a Construction Site.

Uses other than the manufacturer's instructions shall be considered as contravening the regulations. The manufacturer shall not be held responsible for any resulting damage. Any risk shall be borne entirely by the user. Observing the operating instructions and compliance with inspection and servicing requirements shall also be considered as included under use in accordance with the regulations.

1.1 Symbols

Important warnings and pieces of advice are indicated on the machine using symbols. The following symbols are used on the machine:



Read operator's instructions



Ear protection must be worn



Hand protection must be worn



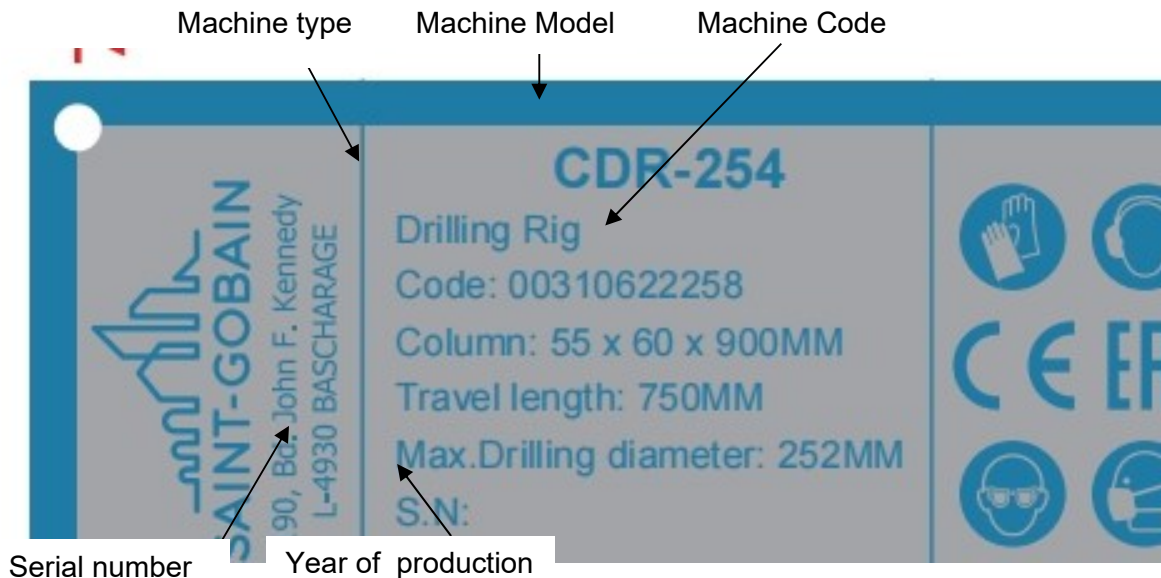
Eye protection shall be worn



Airway protection must be worn

1.2 Machine plate

Important data can be found on the following plate located on the machine:



1.3 Safety instructions for particular operating phases

Before commencing work

- Before commencing work, make yourself familiar with the working environment at the place of use. The working environment includes: obstacles in the area of work and manoeuvre, the firmness of the floor, necessary protection at the site relating to public thoroughfares and the availability of help in the event of accidents.
- Immediately remove damaged or badly worn core bits, as they endanger the operator whilst rotating.
- Only fit NORTON diamond core bits to the machine! The use of other tools can damage the machine!
- Read the core bits' specifications carefully to choose the adequate tool to your application.
- Make sure the handle of the machine is free from oil or grease.
- Attention is drawn to the use of BS2092 safety goggles in conformity with specified Processes No.8 of the Protection of Eyes Regulation 1974, Regulation 2(2) Part 1.
- Make sure that no mounting tool is left on the machine before starting it.

Electrical powered machine

- Make sure that the electrical supply of the machine is equipped with a grounded protective connector. If you have doubts, let a qualified electrician check the electrical system.
- Never pull the machine by the cable to transport it or to separate it from the electrical supply.
- Avoid any contact between the cable and extension cable and heat sources, oil, and

sharp edges.

- Always check the cable before commencing work. If it is damaged, let a qualified electrician replace it.
- Switch the machine off, and isolate it from the main electrical supply before attempting any maintenance or repair on the machine
- In the event of the machine breaking down or stopping for no apparent reason, switch off the main electricity supply. Only a qualified electrician is allowed to investigate the trouble and remedy the fault.
- Always isolate the machine from the electrical supply when not in use.

2 MACHINE DESCRIPTION

Any modification, which could lead to a change in the original characteristics of the machine, may be done only by Saint-Gobain Abrasives who shall confirm that the machine is still in conformity with the safety regulations.

2.1 Short description

The CDR 254 core drill rig is designed for durability and high performance for onsite wet and dry drilling operations of a wide range of masonry and natural stone products.

As with all other NORTON products, the operator will immediately appreciate the attention given to detail and quality of materials used in construction. The machine and its component parts are assembled to high standards assuring long life and minimum maintenance.

2.2 Purpose of use

The machine is designed for drilling a large range of building materials. It is not designed for drilling wood or metals, except steel reinforcing securely embedded in concrete.

2.3 Layout

There are two main parts on the core drilling rig CDR 254: the motor and the rig itself.

The rig is made of sectional aluminium, which reduces the weight of the machine allowing easy transportation. The base ensures stability of the rig, and allows two ways of fixing the rig: using a vacuum pump or fixing anchors. The rig is equipped with a quick fixing plate, so the motor can be fitted or removed quickly from the rig.

2.4 Technical Data

Specification	Value
Maximum diameter (mm)	250
Stroke (mm)	640
Column material	Aluminium
Carriage material	Aluminium
Column section (mm)	55 x 60
Base fixing	Anchors and vacuum
Integrated vacuum base	Yes
Base dimensions (mm)	235 x 335
Height (mm)	950
60 mm support	Yes
Motor mounting plate	Yes
Carriage guiding system	4 rollers
Carriage travel	1/1
Reinforcements	Yes
Inclination	0–45°
Spirit level	Yes
Transport handle	Yes
Transport wheels	Yes
Weight (kg)	14.5

You can find the code number on the machine plate. If you bought a complete kit, your machine is composed of a column with combined base, a motor and a motor mounting plate. These are the characteristics of the motor:

3 ASSEMBLY AND COMMISSIONING

3.1 Assembling the motor on the rig

If you bought a complete kit, the motor quick mounting plate and your motor are already assembled.

To assemble the plate on your motor:

- tighten the 4 screws through the plate in the motor.
- Then, you can assemble the motor on rig by just slipping this plate in the corresponding device on the drilling head. Tighten the plate on the rig using the handle.

3.2 Tool assembly

Only NORTON core bit can be used with the CDR 254.

All tools used must be selected with regard to their maximum permitted cutting speed for the machine's maximum permitted rotation speed.

Before assembling a new bit into the machine, switch it off and isolate it from the main source of electricity.

To assemble a new bit, follow these steps:

- Remove the motor from the rig.
- Use two spanners to dismount the old bit: one to lock the motor axle, and the other to unscrew the bit. Do not grip on threaded parts.
- Grease the thread of the motor axle and of the bit.
- For bits with a 1¼" fitting, insert a bronze or brass washer between the motor axle and the core bit.
- Adapters are available in case core bit and motor axle do not fit together.
- Screw the new core bit. Tighten using the two spanners. Check that it is completely locked on the motor axle.

4 TRANSPORT AND STORING

Take the following measures in order to transport the CDR 254 securely.

4.1 Securing for transport

Dismount the core bit, separate the motor from the rig, and the motor from electrical supply.

4.2 Transport procedure

Use only surface transport to move the CDR 254. Use the handle to carry the rig. No part of the machine has been designed to lift the CDR 254.

4.3 *Long period of inactivity*

If the machine is not going to be used for a long period, completely clean the machine. Store the machine in a dry aired and clean place.

5 OPERATING THE MACHINE

You will find useful description of how to use the machine properly.

5.1 *Site of work*

5.1.1 Siting the machine

- Remove from the site anything, which might hinder the working procedure!
- Make sure the site is sufficiently well lit!
- Observe the conditions for connecting to power supplies!
- Place electric cables in such a way that damage by the CDR 254 is excluded!
- Make sure you have a continual adequate view of the working area so you can intervene in the working process at any time!
- Keep other staff out of the area, so you can work securely.

5.1.2 Space required for operation and maintenance

Leave 2 m around the machine for usage and maintenance of the CDR 254.

5.2 *Cutting method*

5.2.1 Preparing the cut

- Make sure that it is well anchored or clamped firmly when the material to be drilled is not part of a big construction.
- Before drilling a reinforced-concrete construction, make sure you will not damage the structure.
- Make sure the drilling will not damage any gas or plumbing pipelines, or electrical wires.
- Only use the plastic handle of the machine, and no metal parts, to operate the CDR 254, especially when electrical wires might be submerged.
- Make sure before drilling that the core will not cause damage to anything or anyone by falling out of the hole. Always delimit and sign the working area and place warning signals around it.
- If the core can cause damage by falling out of the hole, make the right framework to hold the core when you stop drilling.
- To choose the core bit rotation speed, use the graph on page, which gives the range of speed to use according to the diameter of the hole.
- Before starting your work, check the fixing and stability of the core bit.
- Use the right tools as recommended by the manufacturer depending on the material to be drilled and the required efficiency.
- Apply cooling water continuously whilst drilling and in good time!

5.2.2 Fixing the rig

Only use NORTON tools to fix the rig. Always fix the rig before assembling the motor on the rig. When drilling overhead or horizontally into a wall, extra safety provision should be made with the use of a support sling to the drilling rig, in case of failure of anchor or vacuum.

Fixation with a dowel

To fix the drill rig, you need a 15mm-dowel, a 30cm-long threaded rod, a washer and a wing nut.

- Bore a 15mm-diameter and 50mm-depth hole and clean it.
- Use the appropriate tool to set the dowel in the hole.
- Screw the threaded rod in the dowel.
- Place the rig so that the threaded rod goes through the oblong hole in the base.
- Insert the washer on the rod, and screw the wing nut thoroughly.
- You can adjust the rig by using the screws in the corners of the base.

Fixation with a vacuum pump

- Fix the pump on the base of the rig.
- Place the rubber joint under the base.
- Place the machine where you want to bore, and hold it firmly.
- Start the vacuum pump. You have to reach a pressure under 0,65bar to have a sufficient adhesion of the rig.
- If you cannot reach this pressure, try to smooth the surface for example with plaster.

5.2.3 Drilling perpendicularly to the surface

Once your motor is engaged on the right gear, and the rig placed and fixed at the right position, you can begin your cut. Follow these instructions:

- Put the handle back on the nut, which allows the movement of the cutting head.
- Engage the P.R.C.D.
- Open the water supply.
- Start the motor with the core bit not touching the surface.
- Using the handle, lower slowly the core bit until it lightly touches the surface.
- Slowly turn the handle to make the first centimetre of your drilling. By doing so, you ensure that your hole will be perfectly centred.
- You can then increase the drilling feed speed. If you drill too slowly, you lower the machine efficiency. Drilling too fast results in premature wear of the diamond segments.

5.2.4 Slanting holes

You can incline the rig to make slanting holes:

- Remove the screw on the front of the rig, and loosen the two screws on the side of the rig. Keep the front screw, as you will have to reassemble it next you want to use the rig perpendicularly to the surface.
- Loosen the locking handle on the brace bracket.
- Adjust the rig until you reached the required angle.
- Retighten the two screws on the side of the rig.

Start drilling very slowly because the bit attacks the drilled material only with a little part of its cutting surface, even with only one of its diamond segments. By drilling slowly, you avoid misalignment of the core bit.

5.2.5 Drilling of steel rods in reinforced concrete

When you see that:

- The core bit goes ahead very slowly.
- The force you have to make on the hand wheel increases.
- The water going out of the hole is clear and there are some metallic splinters in it.

You are going through the steel rods for reinforced concrete. Follow these instructions:

- If possible, select a lower gear. Remember that you must firstly take the core bit out of the hole and switch the motor off in order to change from gear.
- Reduce the thrust on the core bit.

Once you have finished cutting the rods, you can reselect the initial gear and drilling speed.

5.2.6 Mechanical clutch

The motor is equipped with a mechanical clutch. It protects against mechanical overload of the motor. However, the motor might be damaged if it works longer than two seconds. Therefore reduce the drilling force and switch the motor off.

5.2.7 Breakaway of a segment

When diamond segments, slivers of steel or parts of your drilled material come away during drilling, and prevent the core bit from drilling, abandon the hole and make another hole, with the same axis of the first but with an larger diameter (15-20mm).

5.2.8 End of the drilling

When you have made the hole you want to drill:

- Lift the core bit out of the hole.
- Stop the motor by using the switch and not the P.R.C.D.
- Stop the water supply.

5.2.9 Pulling the core out of the bit

- Unscrew the core bit from the motor axle.
- Hold the bit vertically.
- Beat lightly the tube of core bit with a wood hammer until the core goes out. Never beat the core bit with violence against a wall or with tools like hammers or wrenches. Otherwise, you may distort the tube, preventing the core from coming out of the core bit and the re-use of the bit.
- If the core is stuck into the bit, try to crush it with a chisel. Be careful not to damage the core bit.

5.2.10 Pulling the core out of the hole (blind holes)

- Using a wedge or a lever, snap the core.
- To extract the core out of the hole use the special pliers or a wire loop, or make a little hole into the top of the core and put into it an eyebolt to pull up and remove the core.

5.2.11 Drilling using an extension rod

To make hole deeper than the tool length:

- Make the hole for the full depth of the bit.
- Take the bit out of the hole and switch the motor off.
- Take the core out of the hole without moving the machine.
- Unscrew the core bit from the motor axle and put it into the hole.
- Screw the extension rod between the core bit and the motor axle. For 1¼" back fitting end, insert a brass or bronze washer.

6 MAINTENANCE AND SERVICING

To ensure a long-term quality from the cutting with the CDR 254, please follow the maintenance plan below:

		Begin of the day	During the changing of the tool	End of the day	Every week	After a fault	After a damage
Whole machine	Visual control (general aspect, watertightness)						
	Clean						
Motor cooling fans	Blow the dirt and dust						
Switch, cables and extension cables	Inspect						
Water hoses and nozzles	Clean						
Motor housing	Clean						
Reachable nuts and screws	Tighten up						

Service the machine only while it is switched off and isolated from the electrical supply.

Cleaning the CDR 254

After work, blow dirt and dust out of all air vents with dry air. Wear protective goggles and mask for this operation.

Inspection and control

Return your core drilling motor for service to your nearest Service Center at least every 200 hours of work. At this occasion, ask for the renewal of your carbon brushes.

7 FAULTS: CAUSES AND CURES

7.1 *Fault-finding procedures*

Should any fault occur during the use of the machine, turn it off, and isolate it from the electric supply. Works dealing with the electric system or supply of the machine can only be done by a qualified electrician.

7.2 *Trouble-shooting guide*

Trouble	Possible source	Resolution
Motor is not running	No electricity	Check the electrical supply (fuse for example)
	Defective switch	CAUTION : can only be solved by qualified electrician
	Defective motor	Change motor or contact motor manufacturer
	Fault due to P.R.C.D.	Check the earth link on your electrical supply. Change the P.R.C.D.
	Connection cable section too small	Change connection cable
	Defective connection cable	Change connection cable
Motor stops during the cutting, but can be restarted after a short period	Drilling advance too quick	Cut slowly
	Core bit is blunt	Sharpen the core bit in calcareous stone
	Defective core bit	Change core bit
	Core bit is not corresponding to the application	Change core bit
No water on the core bit	Water supply closed	Open the water supply
	Water supply system is blocked up	Clean water supply system

7.3 Customer service

When ordering spare parts, please mention:

- The serial number (7 digits).
- The code of the part.
- The exact denomination.
- The number of parts required.
- The delivery address.
- Please indicate clearly the means of transportation required such as "express" or "by air".
Without specific instructions, we will forward the parts through the means which seem appropriate to us and but which is not always the quickest way.

Clear instructions will avoid problems and faulty deliveries.

If not sure, please send us the defective part.

In the case of a warranty is claim, the part must always be returned for evaluation.

Spare parts for the motor can be ordered with the manufacturer of the motor or with their dealer, which is often quicker and cheaper.

This machine has been manufactured by Saint-Gobain Abrasives S.A.

190, Bd. J.F. Kennedy

L- 4930 BASCHARAGE

Grand-Duché de Luxembourg.

Tel. : 00352-50401-1

Fax : 00352- 50 16 33

<http://www.construction.norton.eu>

e-mail: sales.nlx@saint-gobain.com

7.4 Spare parts

In order to consult the spare parts lists, we invite you to visit the after-sales website of Norton Clipper by using the following address:

<https://spareparts.nortonabrasives.com>

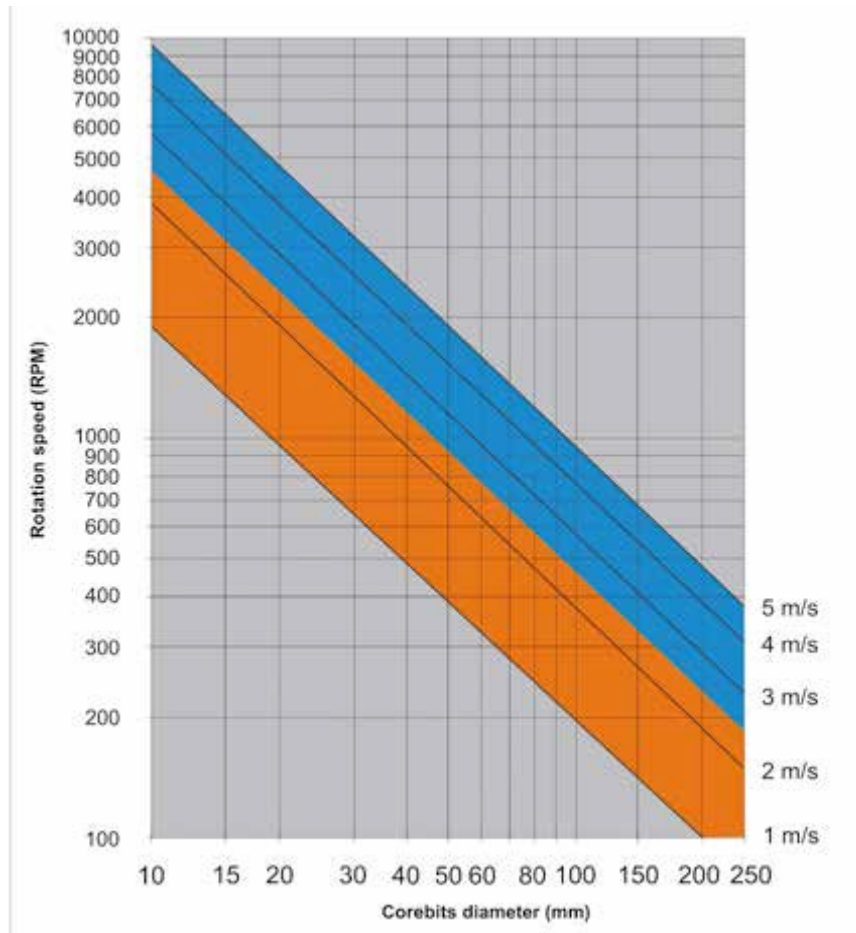
For a quick access, you can also use the QR Code shown below using your mobile phone:



This electronic catalogue provides exploded views and spare parts lists for different machines designed by Norton Clipper so you can find references you need.

8 APPENDIX

8.1 Ideal rotation speed of the core bit in relation to the hole diameter



SAINT-GOBAIN ABRASIVES
INDUSTRIEWEG 21
9420 ERPE-MERE
BELGIUM
TEL: +32(0) 2 267 21 00

SAINT-GOBAIN CONSTRUCTION PRODUCTS
CZ A.S
DIVIZE ABRASIVES
SMRČKOVA 2485/4
180 00 PRAHA 8
CZECH REPUBLIC
TEL: +420 255 719 326
FAX: +420 255 719 321

SAINT-GOBAIN ABRASIVES A/S
DYBENDALSVÆNGET 2,
DK-2630 TAASTRUP
DENMARK
TEL: +45 4675 5244

PO BOX 643706
FORTUNE TOWER OFFICE 2106
JLT BLOCK C
(NEXT TO METRO STATION)
JUMEIRA LAKE TOWER, DUBAI
UNITED ARAB EMIRATES
TEL: +971 4 431 5154
FAX: +971 4 431 5434

SAINT-GOBAIN ABRASIFS
RUE DE L'AMBASSADEUR - B.P.8
78 702 CONFLANS CEDEX
FRANCE
TEL: +33 (0)1 34 90 40 00
FAX: +33 (0)1 39 19 89 56

SAINT-GOBAIN ABRASIVES GMBH
BIRKENSTRASSE 45-49
D-50389 WESSELING
GERMANY
TEL: +49 (0) 2236 703-0
FAX: +49 (0) 2236 703-730

SAINT-GOBAIN ABRASIVES KFT.
1225 BUDAPEST
BÁNYALÉG U. 60/B.
HUNGARY
TEL: +36 1 371 22 50
FAX: +36 1 371 22 55

SAINT-GOBAIN ABRASIVI S.P.A
VIA PER CESANO BOSCONI 4
I-20094 CORSICO MILANO
ITALY
TEL: +39 02 44 851
FAX: +39 02 44 78 266

SAINT-GOBAIN ABRASIVES S.A.
190 RUE J.F. KENNEDY
L-4930 BASCHARAGE
GRAND DUCHE DE LUXEMBOURG
TEL: +352 50 401 1
FAX: +331 83 717 792
NO. VERT (FRANCE): 0800 906 903

SAINT-GOBAIN ABRASIFS, S.A.
2 ALLÉE DES FIGUIERS
AIN SEBAË - CASABLANCA
MOROCCO
TEL: +212 5 22 66 57 31
FAX: +212 5 22 35 09 65

SAINT-GOBAIN ABRASIVES BV
GROENLOSEWEG 28
7151 HW EIBERGEN
P.O. BOX 10
7150 AA EIBERGEN
THE NETHERLANDS
TEL: +31 545 466466
FAX: +31 545 474605

SAINT-GOBAIN ABRASIVES AS
KARIHAUGVEIEN, 89
0186 OSLO
NORWAY
TEL: +47 63 87 06 00
FAX: +47 63 87 06 01

SAINT-GOBAIN HPM POLSKA SP. Z O.O.
UL. NORTON 1, 62-600 KOŁO
62-600 KOŁO
POLAND
TEL: +48 63 26 17 100
FAX: +48 63 27 20 401

SAINT-GOBAIN ABRASIVOS, L. DA
ZONA INDUSTRIAL DA MAIA
I-SECTOR VIII, NO. 122
APARTADO 6050
4476 - 908 MAIA
PORTUGAL
TEL: +351 229 437 940
FAX: +351 229 437 949

SAINT-GOBAIN GLASS
BUSINESS UNIT ABRASIVI
PUNCT DE LUCRU : LOC.VETIS, JUD.
SATU MARE 447355
STR. CAREIULUI 11
PARC INDUSTRIAL RENOVATIO
ROMANIA
TEL: +40 261 839 709
FAX: +40 261 839 710

SG HPM RUS
58, F. ENGELS STR.
STROENIE 2
105082 MOSCOW
RUSSIA
TEL: +74 955 408 355
FAX: +74 959 373 224

SAINT-GOBAIN
ABRASIVES (PTY) LTD
2 MONTEER ROAD
ISANDO 1600
P.O. BOX 67
SOUTH AFRICA
TEL: +27 11 961 2000
FAX: +27 11 961 2184/5

SAINT-GOBAIN ABRASIVOS, S.A.
CTRA. DE GUIPÚZCOA, KM. 7,5
E-31195 BERRIOPLANO (NAVARRA)
SPAIN
TEL: +34 948 306 000
FAX: +34 948 306 042

SAINT GOBAIN ABRASIVES AB
GÅRDSFOGDEVÄGEN 18A
168 66 BROMMA • SVERIGE
SWEDEN
TEL: +46 8 580 881 00
FAX: +46 8 580 881 30

SAINT-GOBAIN INOVATIF MALZEMELER VE
ASINDIRICI SAN. TIC. AS.
ALTAYÇEŞME MAH. ÇAMLI SOK. NO:21 ESAS
OFISPARK KAT:9 34843
MALTEPE, İSTANBUL • TURKEY
TEL: 0090-216-217 12 50
FAX: 0090-216-442 40 74

SAINT-GOBAIN ABRASIVES LTD.
UNICORN HOUSE UNIT 1, AMISON CLOSE
REDHILL BUSINESS PARK
STAFFORD ST161WB
UNITED KINGDOM
TEL: +44 1785 279 553
FAX: +44 1785 213 487