



SAINT-GOBAIN

# WINTER

Reshaping  
your  
world.

**PCX**  
PRIME

## INNOVATIVE DIAMOND WHEELS FOR PCD AND PCBN GRINDING

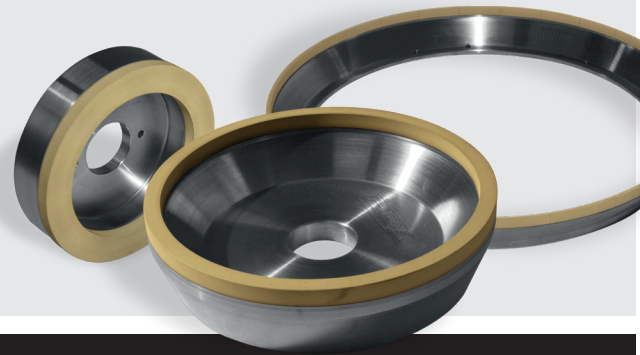


# INNOVATIVE VITRIFIED BOND PCX PRIME



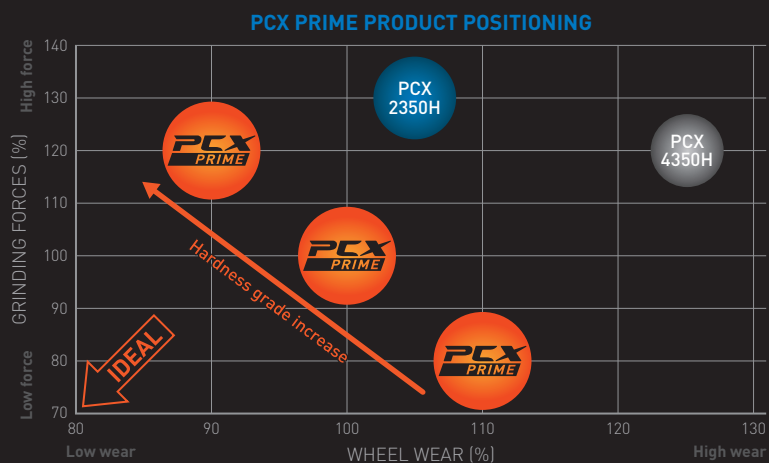
Machining of superhard materials is one of the most demanding, costly and time consuming grinding operations. Therefore, choosing the right grinding tool is the key to **improving process efficiency**.

Designed to meet the constantly growing PCD and PcBN tools industry's requirements for improved surface finish and lower grinding forces, **Norton Winter PCX Prime** offers a **high quality grinding solution** with the optimum combination of free grinding behaviour and edge stability.



## ADVANTAGES

- **LONGER WHEEL LIFE**  
for less changes and downtimes
- **OPTIMISED FREE GRINDING BEHAVIOUR**  
for higher stability and part quality
- **REDUCED GRINDING FORCES**  
for lower workpiece load
- **EXCELLENT SURFACE QUALITY AND CUTTING EDGE CHIPPING**
- **HIGHER FEED RATES**  
for reduced recondition intervals
- **IMPROVED PRODUCTIVITY AND COST-PERFORMANCE RATIO**



## MADE-TO-ORDER

**PCX Prime** is available in all grain sizes, common shapes and dimensions. Customised tools can also be developed for specific requirements. Please contact our team of experts for a recommendation.

### PCX PRIME PRODUCT AVAILABILITY:

GRINDING WHEEL SHAPE	DIAMETER	COVERING WIDTHS
Cup wheels such as 2A2T, 6A2, 6A9, 11A2, 12A2 and others	40 - 400 mm	4 - 25 mm
Peripheral discs such as 1A1, 1V1, 1F1 and others	50 - 500 mm	3 - 20 mm

Grain sizes: from D5

#### Norton Winter starting recommendation

PCD	▶ <b>PCX Prime E</b>	Typical range: <b>PCX Prime E – PCX Prime I</b>
PcBN	▶ <b>PCX Prime I</b>	Typical range: <b>PCX Prime I – PCX Prime O</b>



Saint-Gobain Diamantwerkzeuge GmbH  
Schützenwall 13 - 17  
D-22844 Norderstedt  
Germany

Tel: +49 (0) 4052 58-0  
Fax: +49 (0) 4052 58-215

[www.nortonabrasives.com](http://www.nortonabrasives.com)  
[www.youtube.com/NortonAbrasivesEMEA](http://www.youtube.com/NortonAbrasivesEMEA)

Norton Winter is a registered trademark of Saint-Gobain.  
Form # 3937

